



PRODUCT CATALOGUE

PRODUCT LIST

LAB CHROMATOGRAPHY CONSUMABLE

VIALS, CAPS, SEPTA, MICRO-INSERTS, GC SEPTA,
CULTURE TUBES, SYRINGE FILTER, REAGENT BOTTLE,
CRIMPER

Since 2007



Anhui Kangde New Material Technology Co.,Ltd

Phone/Whatsapp:+86 19956635178

E-mail: Jason.wangxiaokang@gmail.com



Anhui Kangde New Material Technology co.,Ltd

安徽康德新材料科技有限公司



>>

关于我们

ABOUT US

Anhui Kangde New Material Technology Co.,Ltd. is a leading global supplier specializing in lifesciences, chemistry, and laboratory consumables, Our primary product includes high-performance liquid chromatography (HPLC) and gas chromatography(GC) consumables, such as chromatography autosampler vials with closures, inserts, crimpers, and syringe filters. Additionally, we provide water analysis consumables including COD test tubes, etc.

With a strong international presence, Anhui Kangde has successfully supplied products to over 70 countries, serving more than 4,000 customers worldwide. Our dedicated workforce of 120 employees operates within a Class 100,000 cleanroom environment. We have ISO, GMP, and Bureau Veritas certifications, which ensure that we maintain the highest quality standards while offering competitive pricing to our valued global customers.

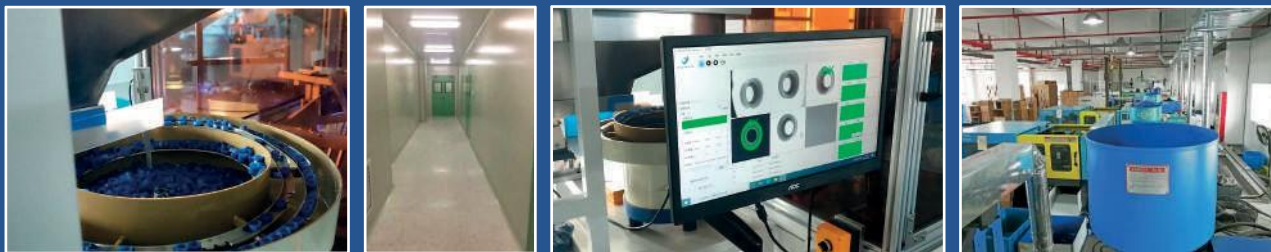
Our vision is to become a global leader in scientific research and laboratory supplies, helping scientists and researchers drive innovation and positively impact the world. We strive for continuous improvement and provide cutting-edge solutions that contribute to progress in every field of research.



>>

生产车间

WORKSHOP



目录

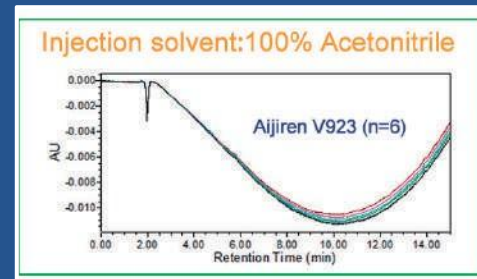
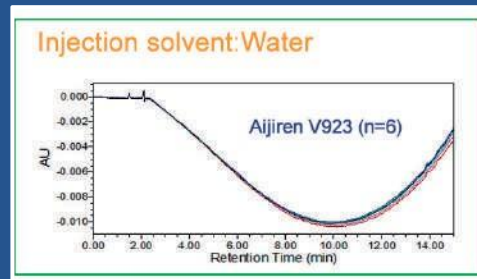
CONTENTS

About us	1-3
Kangde Vials Quality and Choose Vial & Septa	5-8
Micro-vial	9-11
Sample Vial	12-25
8-425 Screw Neck Vials and Cap & Septa	13-14
9mm Short Thread Vials and Cap & Septa	15-17
10-425 Screw Neck Vials and Cap & Septa	18
11mm Snap Ring Vials and Cap & Septa	19-20
11mm Crimp Neck Vials and Cap & Septa	21-22
Micro-Insert for Sample Vials	23
13-425 Screw Neck Vials and Cap & Septa	24-25
Headspace Vial	26-30
18mm Screw Headspace Vials and Cap & Septa	27-28
20mm Crimp Headspace Vials and Cap & Septa	29-30
Sample Storage Vial	31-37
15-425 Screw Storage Vials and Cap & Septa	32-33
24-400 Screw Neck Vials and Cap & Septa	34-35
TOC Vials and Cap & Septa	36-37
Vial Rack and Crimper & Decrimper	38
Glass Test Tubes and Culture Tubes	39-41
GC Septa and Septa Customized	42-43
Syringe Filter and Filter Paper	44-49
Reagent Bottle/Media Bottle	50-52
Product Package	53-54

BETTER VIALS

Kangde has been involved in the design and manufacture of vials, caps and seals for chromatography as long as chromatography has been used as an automatic analytical technique. Therefore k a n g d e is able to offer suitable combinations for the most popular instruments currently in use.

实验室 LABORATORY



如何选择垫片? HOW TO CHOOSE SEPTA?

• Protect sample integrity by choosing the right septa for your application

Proper septa selection is critical to preventing contamination and avoiding damage to the needle and instrument.

• Are the septa chemically compatible with your samples and solvents?

Kangde provides this septa compatibility as a guide and starting reference point. We realized that chemical compatibility can vary depending on the concentration of the solvent, temperature, molecular weight of the solvent, and other factors. Therefore it is always recommended you to try a variety of septa to determine the best one for analysis.

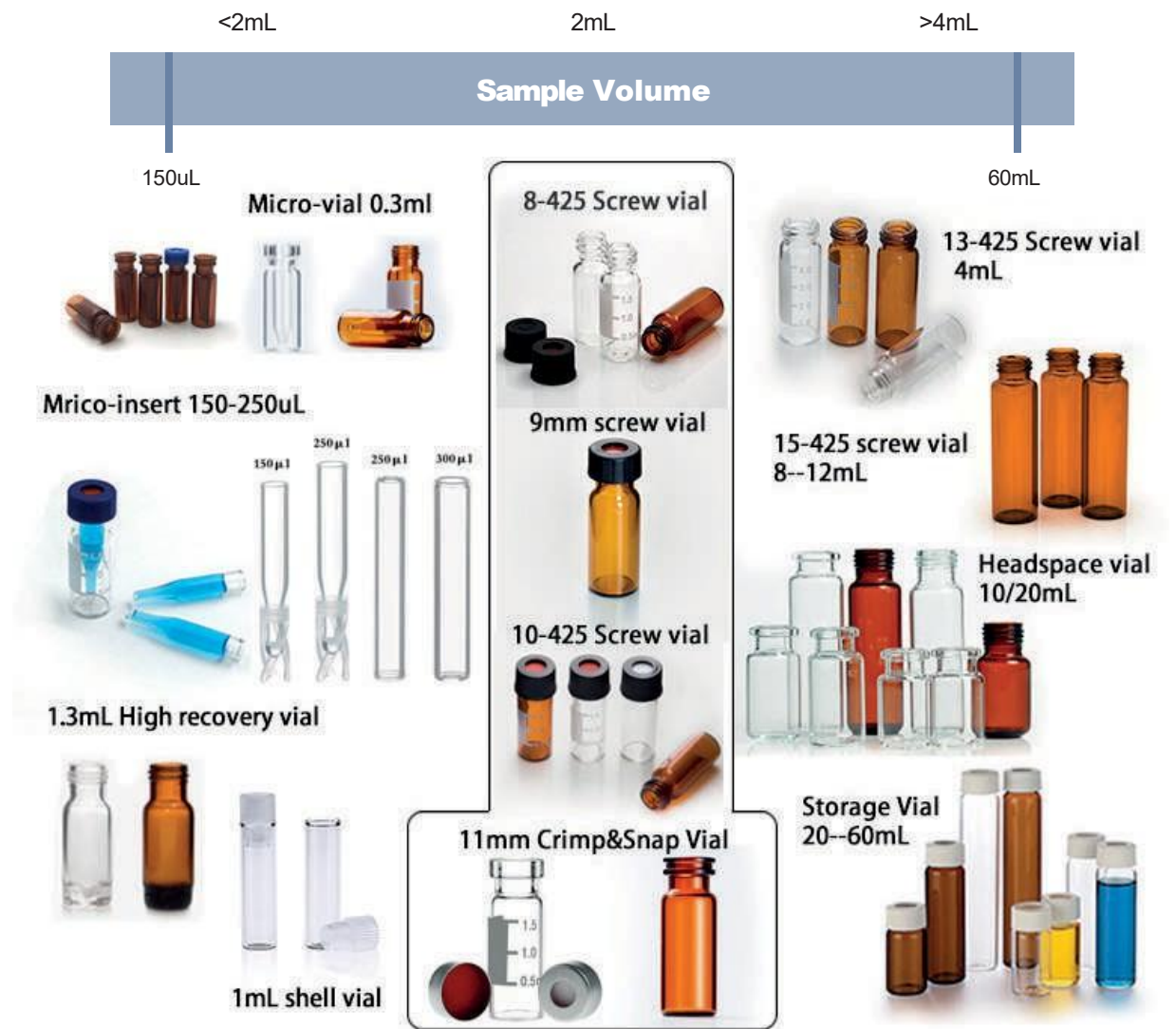
SEPTA COMPATIBILITY

	PTFE	PTFE /Silicone rubber	PTFE /Silicone rubber/PTEE	PTEE /Red rubber	Fluorine rubber	PTFE /Butyl rubber
Acetonitrile	◆	◆	◆	◆		◆
Hexane,Heptane,Methane	◆		◆	◆	◆	
Methanol	◆	◆	◆	◆		◆
Benzene	◆		◆		◆	
Tetrahydrofuran	◆		◆			
Toluene	◆		◆			
Dimethylformamide DMF	◆	◆	◆			◆
Dimethyl Sulfone DMSO	◆	◆	◆			◆
Ether	◆	◆	◆			
Chloromethane Chloride	◆		◆			
Ethanol	◆	◆	◆	◆	◆	◆
Acetic Acid	◆	◆	◆			◆
Acetone	◆	◆	◆			
Phenol	◆	◆	◆		◆	◆
cyclohexane	◆		◆	◆	◆	

※ PTFE/silicone/ PTFE has the same chemical compatibility of PTFE ONLY UNTIL PUNCTURED.

※ Please contact us if you need other Teflon composite products.

HOW TO CHOOSE VIAL?



What is glass 7.0/5.0type?

Type	Material	Coefficient of Thermal Expansion	Features
7.0	Borosilicate Glass	$(6.2\sim 7.5) \times 10^{-6} \text{ K}^{-1}$ (20~300° C)	Economy Type Competitive Price For Disposable Quick Test
5.0	Borosilicate Glass	$\leq 5 \times 10^{-6} \text{ K}^{-1}$ (20~300° C)	Good Price For Test and Save Samples



Micro-vials

1mL Shell Vials

The vials are used on instruments of the following manufacturers: Alcott, Shimadzu, Waters etc.

Part No.	Description	Pcs/Pack
V181	1mL Shell Vial, Clear, 8mm PE-Plug, Soft, Without Insertion, 8.2*40mm	100
VP181	1mL Plastic Shell Vial, Clear, 8mm PE-Plug, Soft, Without Insertion, 8.2*40mm	100
V183	1mL Shell Vial, Amber, 8mm PE-Plug, Soft, Without Insertion, 8.2*40mm	100



V181

0.3mL Micro-Vials, 11.6*32mm, Screw, Snap, Crimp

Provides a variety of sealing methods to meet different experimental needs:
Adapts to various temperature conditions and can withstand high and low temperature environments.
Compatible with various brands of autosamplers, such as Agilent, Thermo Fisher, Shimadzu, etc.

Part No.	Description	Pcs/Pack
VP91	0.3mL Clear PP Short Screw Micro-Vial, 9mm Thread, 11.6*32mm	100
VP93	0.3mL Amber PP Short Screw Micro-Vial, 9mm Thread, 11.6*32mm	100
VP101	0.3mL Clear PP Snap Ring/Crimp Micro-Vial, 11mm, 11.6*32mm	100
VP102	0.8mL Clear PP Snap Ring/Crimp Micro-Vial, 11mm, 11.6*32mm	100
VP103	0.3mL Amber PP Snap Ring/Crimp Micro-Vial, 11mm, 11.6*32mm	100



VP91



VP93



VP101



VP102



VP103

● 0.3mL Micro-Vials, Integrated w/Micro-Inserts, Base Bonded

Part No.	Description	Pcs/Pack
VL913	0.3mL Clear 9mm Screw Vial Integrated w/Micro-Insert, Base Bonded, 11.6*32mm	100
VL923	0.3mL Clear 9mm Screw Vial w/Write-on Spot, Integrated w/Micro-Insert, Base Bonded, 11.6* 32mm	100
VL935	0.3mL Amber 9mm Screw Vial Integrated w/Micro-Insert, Base Bonded, 11.6* 32mm	100
VL945	0.3mL Amber 9mm Screw Vial w/Write-on Spot, Integratedw/Micro-Insert, Base Bonded, 11.6*32mm	100
VL1113	0.3mL Clear 11mm Crimp Vial Integrated w/Micro-Insert, Base Bonded, 11.6* 32mm	100
VL1123	0.3mL Clear 11mm Crimp Vial w/Write on Spot, Integrated w/Micro-Insert, Base Bonded, 11.6* 32mm	100
VL1135	0.3mL Amber 11mm Crimp Vial Integrated w/Micro-Insert, Base Bonded, 11.6* 32mm	100
VL1145	0.3mL Amber 11mm Crimp Vial w/Write-on Spot, Integrated w/Micro-Insert, Base Bonded, 11.6*32mm	100



VL913



VL923



VL935



VL945



VL1113



VL1123



VL1135



VL1145



8-425 Screw Neck Vials ND8, Small Opening

Description:

Made from borosilicate glass, featuring a flat bottom and compatibility with various automatic samplers. Available in clear or amber, they have a small opening and come with polypropylene sealing caps and septa to ensure sample integrity. These vials are widely used in environmental monitoring, food and beverage analysis, pharmaceutical research, and biotechnology.

Feature:

- > 8 mm screw vials can be used on all common autosampler;
- > Standard narrow neck design for GC and HPLC;
- > Wider opening for easy puncture;
- > PTFE/silicone septa have excellent chemical inertness, acid and alkali resistance;
- > Screw black open top pp caps.

Part No.	Description	Pcs/Pack
V817	1.5mL Clear Screw Neck Vial, 8-425 Thread, 11.6*32mm, 7.0 type	100
V827	1.5mL Clear Screw Neck Vial w/Write-on Spot, 8-425 Thread, 11.6*32mm, 7.0 type	100
V837	1.5mL Amber Screw Neck Vial, 8-425 Thread, 11.6*32mm, 7.0 type	100
V847	1.5mL Amber Screw Neck Vial w/Write-on Spot, 8-425 Thread, 11.6*32mm, 7.0 type	100
V847-S	1.5mL Amber Screw Neck Vial w/Write-on Spot, 8-425 Thread, 11.6*32mm, 7.0 type, Silanized	100
V813	1.5mL Clear Screw Neck Vial, 8-425 Thread, 11.6*32mm, 5.0 type	100
V823	1.5mL Clear Screw Neck Vial w/Write-on Spot, 8-425 Thread, 11.6*32mm, 5.0 type	100
V835	1.5mL Amber Screw Neck Vial, 8-425 Thread, 11.6*32mm, 5.0 type	100
V845	1.5mL Amber Screw Neck Vial w/Write-on Spot, 8-425 Thread, 11.6*32mm, 5.0 type	100



V813



V823



V835



V845

8-425 Thread Small Opening Caps with Septa

Part No.	Description	Pcs/Pack
S81	White PTFE/Red Silicone Septa Φ8*1.5mm	100
S82	Red PTFE/White Silicone Septa Φ8*1.5mm	100
S83	Red PTFE/White Silicone/Red PTFE Septa Φ8*1.5mm	100
S811	Pre-slit White PTFE/Red Silicone Septa Φ8*1.5mm	100
S822	Pre-slit Red PTFE/White Silicone Septa Φ8*1.5mm	100
S844	Pre-slit Blue PTFE/White Silicone Septa Φ8*1.5mm	100
C81	8-425 Black Screw PP Cap, 5.5mm Centre Hole	100
C82	8-425 Black Screw PP Cap, Closed-top	100
C83	8-425 White Screw PP Cap, 5.5mm Centre Hole	100
SC8181	White PTFE/Red Silicone Septa, 8-425 Black Screw PP Cap, 5.5mm Centre Hole	100
SC8281	Red PTFE/White Silicone Septa, 8-425 Black Screw PP Cap, 5.5mm Centre Hole	100
SC8381	Red PTFE/White Silicone /Red PTFE Septa, 8-425 Black Screw PP Cap, 5.5mm Centre Hole	100
SC81181	Pre-slit White PTFE/Red Silicone Septa, 8-425 Black Screw PP Cap, 5.5mm Centre Hole	100
SC8182	White PTFE/Red Silicone Septa, 8-425 Black Screw PP Cap, Closed-top	100
SC8183	White PTFE/Red Silicone Septa, 8-425 White Screw PP Cap, 5.5mm Centre Hole	100

※ Septa and Cap can be customized, such as color, size, material.



SC8281



SC8282



SC8381



SC8383



SC81181

9mm short Thread Vials ND9



Description:

These vials are compatible with Agilent, HTA, Shimadzu, Thermo Scientific, Varian, Waters, and etc.; Suitable for laboratory analysis and storage needs. These vials are compatible with most common autosamplers, such as Agilent, HTA, Shimadzu, Thermo Scientific, Varian, Waters, and others; Suitable for laboratory analysis and storage needs.

Feature:

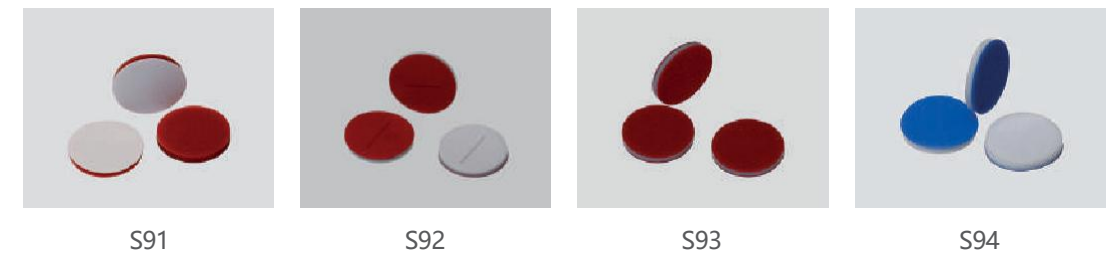
- > Capacity: Standard volume is 1.5 mL with a residual volume under 120 μ L, ideal for limited samples;
- > Sealing: Works with various polypropylene closures and PTFE/silicone septa for excellent chemical resistance.

Part No.	Description	Pcs/Pack
V917	1.5mL Clear 9mm Screw Vial, 11.6*32mm, 7.0 type	100
V917-S	1.5mL Clear 9mm Screw Vial, 11.6*32mm, 7.0 type, Silanized	100
V927	1.5mL Clear 9mm Screw Vial w/Write-on Spot, 11.6*32mm, 7.0 type	100
V927-S	1.5mL Clear 9mm Screw Vial w/Write-on Spot, 11.6*32mm, 7.0 type, Silanized	100
V937	1.5mL Amber 9mm Screw Vial, 11.6*32mm, 7.0 type	100
V947	1.5mL Amber 9mm Screw Vial w/Write-on Spot, 11.6*32mm, 7.0 type	100
V913	1.5mL Clear 9mm Screw Vial, 11.6*32mm, 5.0 type	100
V923	1.5mL Clear 9mm Screw Vial w/Write-on Spot, 11.6*32mm, 5.0 type	100
V935	1.5mL Amber 9mm Screw Vial, 11.6 32mm, 5.0 type	100
V945	1.5mL Amber 9mm Screw Vial w/Write-on Spot, 11.6*32mm, 5.0 type	100
VR913	1.3mL Clear 9mm Screw Vial, High Recovery with 30 μ L Reservoir, 11.6*32mm, 5.0 type	100
VR935	1.3mL Amber 9mm Screw Vial, High Recovery with 30 μ L Reservoir, 11.6*32mm, 5.0 type	100
VP923	1.5mL Clear PP 9mm Screw Vial, 11.6* 32mm	100
VP945	1.5mL Amber PP 9mm Screw Vial, 11.6* 32mm	100



9mm PP Short Thread Caps with Septa

Part No.	Description	Pcs/Pack
S91	White PTFE/Red Silicone Septa Φ 9*1mm	100
S92	Red PTFE/White Silicone Septa Φ 9*1mm	100
S93	Red PTFE/White Silicone/Red PTFE Septa Φ 9*1mm	100
S944	I Pre-slit Blue PTFE/White Silicone Septa Φ 9*1mm	100
SX944	X Pre-slit Blue PTFE/White Silicone Septa Φ 9*1mm	100
C91	9mm Blue Short Screw PP Cap, 6mm Centre Hole	100
C92	9mm Blue Short Screw PP Cap, Closed-top	100
C93	9mm Black Short Screw PP cap, 6mm Centre Hole	100
C94	9mm Black Short Screw PP cap, Closed-top	100
C95	9mm Red Short Screw PP cap, 6mm Centre Hole	100
C96	9mm Red Short Screw PP cap, Closed-top	100
C97	9mm Yellow Short Screw PP cap, 6mm Centre Hole	100
C99	9mm Green Short Screw PP cap, 6mm Centre Hole	100
SC9191	White PTFE/Red Silicone Septa, 9mm Blue Short Screw PP Cap, 6mm Centre Hole	100
SC91191	Pre-slit White PTFE/Red Silicone Septa, 9mm Blue Short Screw PP Cap, 6mm Centre Hole	100
SC9291	Red PTFE/White Silicone Septa, 9mm Blue Short Screw PP Cap, 6mm Centre Hole	100
SC92291	Pre-slit Red PTFE/White Silicone Septa, 9mm Blue Short Screw PP Cap, 6mm Centre Hole	100
SC9391	Red PTFE/White Silicone/Red PTFE Septa, 9mm Blue Short Screw PP Cap, 6mm Centre Hole	100



9mm PP Short Thread Caps with Septa

Part No.	Description	Pcs/Pack
SC9192	White PTFE/Red Silicone Septa, 9mm Blue Short Screw PP Cap, Colsed-top	100
SC9194	White PTFE/Red Silicone Septa, 9mm Black Short Screw PP Cap, Colsed-top	100
SC9196	White PTFE/Red Silicone Septa, 9mm Red Short Screw PP Cap, Colsed-top	100
SC9198	White PTFE/Red Silicone Septa, 9mm Yellow Short Screw PP Cap, Colsed-top	100
SGSC9291	Clear PTFE/White Silicone Septa, 9mm Blue PP Cap+Metal Cap, Assembled, 6mm Centre Hole,	100
SC9291-C	Red PTFE/White Silicone Septa, 9mm Clear PP Cap, 6mm Centre Hole,	100

※ Different septa and caps can be assembled with each other

※ Septa and Cap color can be customized, such as color, size, material.



SC9196



SC9198



SGSC9291



SC9291-C

Bonded Cap&Septa

Part No.	Description	Pcs/Pack
B-SC9291	Clear PTFE/White Silicone Septa, 9mm Blue PP Cap, 6mm Centre Hole, Bonded	100
B-SC92291	Pre-slit Clear PTFE/White Silicone Septa, 9mm Blue PP Cap, 6mm Centre Hole, Bonded	100
B-SC9291-A	Red PTFE/White Silicone Septa, 9mm Blue PP Cap, 6mm Centre Hole, Bonded	100
B-SC9193-A	Clear PTFE/Red Silicone Septa, 9mm Black PP Cap, 6mm Centre Hole, Bonded	100
B-SC92291-A	Pre-slit Red PTFE/White Silicone Septa, 9mm Blue PP Cap, 6mm Centre Hole, Bonded	100



B-SC9291



B-SC9291-A

10-425 Screw Neck Vials ND10, Wide Opening

Description:

The vials are compatible with instruments from manufacturers such as Jasco, PerkinElmer, Shimadzu, Varian, Waters®, and others.

Feature:

- > Wide opening allows easy filling;
- > Wide range of micro inserts;
- > Closed top screw seals for storage;
- > Single septa as a replacement available.

Part No.	Description	Pcs/Pack
VN1013	1.5mL Clear Screw Vial, 10-425 Thread, 11.6*32mm, 5.0 type	100
VN1023	1.5mL Clear Screw Vial w/Write-on Spot, 10-425 Thread, 11.6*32mm, 5.0 type	100
VN1035	1.5mL Amber Screw Vial, 10-425 Thread, 11.6*32mm, 5.0 type	100
VN1045	1.5mL Amber Screw Vial w/Write-on Spot, 10-425 Thread, 11.6*32mm, 5.0 type	100



VN1013



VN1023



VN1035



VN1045



SNC102101

10-425 Thread Caps with Septa

Part No.	Description	Pcs/Pack
SN101	White PTFE/Red Silicone Septa Φ 10*1.5mm	100
SN102	Red PTFE/White Silicone Septa Φ 10*1.5mm	100
SNC101101	White PTFE/Red Silicone Septa, 10-425 Black Screw PP Cap, 7mm Centre Hole	100
SNC102101	White PTFE/Red Silicone Septa, 10-425 Black Screw PP Cap, 7mm Centre Hole	100

※ Septa and Cap color can be customized, such as color, size, material.

11mm Snap Ring Vials ND11

Description:

ND11 Snap Ring Vial, suitable for Agilent, CTC, DANI, Dionex, Jasco, Shimadzu, Spark, Thermo Scientific, Varian, Waters etc.

Feature:

- > Vials feature a 40% larger opening for easier filling and reduced needle damage;
- > Available with Natural, black, or blue snap ring caps;
- > Available as closed top screw seals or with center hole;
- > Vials with integrated Micro-Insert are available.

Part No.	Description	Pcs/Pack
V1017	1.5mL Clear Snap Ring Vial, 11.6*32mm, 7.0 type	100
V1027	1.5mL Clear Snap Ring Vial w/Write-on Spot, 11.6*32mm, 7.0 type	100
V1013	1.5mL Clear Snap Ring Vial, 11.6*32mm, 5.0 type	100
V1023	1.5mL Clear Snap Ring Vial w/Write-on Spot, 11.6*32mm, 5.0 type	100
V1035	1.5mL Amber Snap Ring Vial, 11.6*32mm, 5.0 type	100
V1045	1.5mL Amber Snap Ring Vial w/Write-on Spot, 11.6*32mm, 5.0 type	100



V1035



V1045



V1013



V1023

11mm Snap-top Cap with Septa

Part No.	Description	Pcs/Pack
S101	White PTFE/Red Silicone Septa Φ11*1mm	100
S102	Red PTFE/White Silicone Septa Φ11*1mm	100
S103	Red PTFE/White Silicone/Red PTFE Septa Φ11*1mm	100
S104	Blue PTFE/White Silicone Septa Φ11*1mm	100
S1011	Pre-slit White PTFE/Red Silicone Septa Φ11*1mm	100
S1022	Pre-slit Red PTFE/White Silicone Septa Φ11*1mm	100
S1044	Pre-slit Blue PTFE/White Silicone Septa Φ11*1mm	100
C101	11mm Natural Snap-top PE Cap, 6mm Centre hole Φ11mm	100
C102	11mm Snap-top PE Cap, 6mm Centre hole Φ11mm	100
C103	11mm Snap-top PE Cap, 6mm Centre hole Φ11mm	100
SC101101	White PTFE/Red Silicone Septa, 11mm Natural Snap-top PE Cap, 6mm Centre Hole	100
SC102101	Red PTFE/White Silicone Septa, 11mm Natural Snap-top PE Cap, 6mm Centre Hole	100
SC102102	Red PTFE/White Silicone Septa, 11mm Blue Snap-top PE Cap, 6mm Centre Hole	100
SC103101	Red PTFE/White Silicone/Red PTFE Septa, 11mm Natural Snap-top PE Cap, 6mm Centre Hole	100
SC104101	Blue PTFE/White Silicone Septa, 11mm Natural Snap-top PE Cap, 6mm Centre Hole	100
SC1011101	Pre-slit White PTFE/Red Silicone Septa, 11mm Natural Snap-top PE Cap, 6mm Centre Hole	100

※ Septa and Cap can be customized, such as color, size, material.



SC101101



SC102102



SC104101

11mm Crimp Vials ND11

Description:

Suitable for Agilent, Waters, Bruker, PerkinElmer, ThermoScientifics, Shimadzu, CTC, and other rotating or robotic arm samplers.

Feature:

- > Larger opening than standard narrow opening vials by 40%, prevents syringe problems;
- > Amber color provides an increased shelf life optimal for the storage of samples of light-sensitive samples;
- > Caps are made of high-quality polypropylene to exact manufacturing tolerances;
- > Septa are made of PTFE/Silicone to ensure proper function.



Part No.	Description	Pcs/Pack
V1117	1.5mL Clear Crimp Neck Vial, 11.6*32mm, 7.0 type	100
V1127	1.5mL Clear Crimp Neck Vial w/Write-on Spot, 11.6*32mm, 7.0 type	100
V1137	1.5mL Amber Crimp Neck Vial, 11.6*32mm, 7.0 type	100
V1147	1.5mL Amber Crimp Neck Vial w/Write-on Spot, 11.6*32mm, 7.0 type	100
V1147-S	1.5mL Amber Crimp Neck Vial w/Write-on Spot, 11.6*32mm, 7.0 type, Silanized	100
V1113	1.5mL Clear Crimp Neck Vial, 11.6*32mm, 5.0 type	100
V1123	1.5mL Clear Crimp Neck Vial w/Write-on Spot, 11.6*32mm, 5.0 type	100
V1135	1.5mL Amber Crimp Neck Vial, 11.6*32mm, 5.0 type	100
V1145	1.5mL Amber Crimp Neck Vial w/Write-on Spot, 11.6*32mm, 5.0 type	100

11mm Crimp-top Caps with Septa

Part No.	Description	Pcs/Pack
S111	White PTFE/Red Silicone Septa Φ11*1mm	100
S112	Red PTFE/White Silicone Septa Φ11*1mm	100
S113	Red PTFE/White Silicone/Red PTFE Septa Φ11*1mm	100
S1111	Pre-slit White PTFE/Red Silicone Septa Φ11*1mm	100
S1122	Pre slit Red PTFE/White Silicone Septa Φ11*1mm	100
C111	11mm Crimp-top Aluminum Cap, 5.5mm Centre Hole	100
SC111111	White PTFE/Red Silicone Septa, 11mm Crimp-top Aluminum Cap, 5.5mm Centre Hole	100
SC112111	Red PTFE/White Silicone Septa, 11mm Crimp-top Aluminum cap, 5 5mm Centre Hole	100
SC112112	Red PTFE/White Silicone Septa, 11mm Crimp-top Red Aluminum cap, 5 5mm Centre Hole	100
SC112113	Red PTFE/White Silicone Septa, 11mm Crimp-top Blue Aluminum cap, 5 5mm Centre Hole	100
SC112114	Red PTFE/White Silicone Septa, 11mm Crimp-top Golden Aluminum cap, 5 5mm Centre Hole	100
SC113111	Red PTFE/White Silicone/Red PTFE Septa, 11mm Crimp-top Aluminum Cap, 5.5mm Centre Hole	100
SC115111	Nature PTFE/Red Rubber, 11mm Crimp-top Aluminum Cap, 5.5mm Centre Hole	100
SC1111111	Pre-slit White PTFE/Red Silicone Septa, 11mm Crimp-top Aluminum Cap, 5.5mm Centre Hole	100
SC112211	Pre-slit Red PTFE/White Silicone Septa, 11mm Crimp-top Aluminum Cap, 5.5mm Centre Hole	100

※ Septa and Cap can be customized, such as color, size, material.



Micro Insert for 2ml Vials

Description:

8-425 Screw vial, 9mm Short Thread Vial, 10-425 Screw Vial, 11mm Snap Vial, 11mm Crimp Vial.

Feature:

- > Made with high precision, these inserts offer reliability and will not contaminate your samples;
- > These inserts are the best choice when using low volumes of biological or basic compounds that might interact or adsorb to borosilicate glass;
- > Suitable for GC, HPLC/UHPLC, and mass spectrometry (MS) applications.

Part No.	IP150	IV150	I250	IP250	IV250	I300
Volume	150uL	150uL	250uL	250uL	250uL	300uL
Suitable for Vial Types	8-425	8-425	8-425	9mm vials; 10-425 vials; 11mm Snap vials; 11mm crimp vial;	9mm vials; 10-425 vials; 11mm Snap vials; 11mm crimp vial;	9mm vials; 10-425 vials; 11mm Snap vials; 11mm crimp vial;



13-425 Screw Neck Vials ND13

Description:

Often used in conjunction with Agilent, Shimadzu, Spectrophysics, Varian, and other autosamplers. Available as closed or open top screw seals with 13-425 thread.

Part No.	Description	Pcs/Pack
V1317	4mL Clear 13-425 Screw Vial, 15*45mm, 7.0 type	100
V1327	4mL Clear 13-425 Screw Vial, w/Write-on Spot, 15*45mm, 7.0 type	100
V1335	4mL Amber 13-425 Screw Vial, 15*45mm, 5.0 type	100
V1345	4mL Amber 13-425 Screw Vial w/Write-on Spot, 15*45mm, 5.0 type	100



V1317



V1327



V1335



V1345

13-425 Thread Caps with Septa

Part No.	Description	Pcs/Pack
S131	White PTFE/Red Silicone Septa $\Phi 13 \times 1.5\text{mm}$	100
S132	Red PTFE/White Silicone Septa $\Phi 13 \times 1.5\text{mm}$	100
S133	Red PTFE/White Silicone/Red PTFE Septa $\Phi 13 \times 1.5\text{mm}$	100
S134	Nature PTFE/Nature Silicone Septa $\Phi 13 \times 1.5\text{mm}$	100
C131	13mm Black Screw PP Cap, 8.5mm Centre Hole $\Phi 13\text{mm}$	100
C132	13mm Black Screw PP Cap, Closed-top $\Phi 13\text{mm}$	100
SC131131	White PTFE/Red Silicone Septa, 13mm Black Screw PP Cap, 8.5mm Centre Hole	100
SC132131	Red PTFE/White Silicone Septa, 13mm Black Screw PP Cap, 8.5mm Centre Hole	100
SC133131	Red PTFE/White Silicone/Red PTFE Septa, 13mm Black Screw PP Cap, 8.5mm Centre Hole	100
SC134131	Nature PTFE/Nature Silicone Septa, 13mm Black Screw PP Cap, 8.5mm Centre Hole	100
SC134132	Nature PTFE/Nature Silicone Septa, 13mm Black Screw PP Cap, Closed-top	100
SC1311131	Pre-slit White PTFE/Red Silicone Septa, 13mm Black Screw PP Cap, 8.5mm Centre Hole	100

※ Septa and Cap can be customized, such as color, size, material.



SC131131



SC132131



SC134132



HeadSpace Vials

6-20mL Vials

- Two types:
 - 18mm Screw
10-20mL HS Vials
 - 20mm Crimp
6-20mL HS Vials



18mm Screw Thread Headspace Vials

Description:

Screw-top vials and caps provide the tightest seal and ensure the most consistent headspace results. With precision threading, headspace vials and caps offer reliability and ease of use, making them ideal for environmental, food and beverage, industrial hygiene, drug testing, and clinical chemistry applications. The rounded bottom enhances durability, offering greater resistance to high pressure during the heating process.

Feature:

- > Easily managed by robotic arms that remove the vial from the tray;
- > Distribute the internal pressure created at high temperatures across the glass surface;
- > The beveled edge provides a robust rim that presses firmly into the septum, ensuring a tighter seal.

Part No.	Description	Pcs/Pack
VA101	10mL Clear Precision Screw Headspace Vial, Round Bottom, 22.5*46mm, 5.0 type	100
VA201	20mL Clear Precision Screw Headspace Vial, Round Bottom, 22.5* 75mm, 5.0 type	100
VA1035	10mL Amber Precision Screw Headspace Vial, Round Bottom 22.5*46mm, 5.0 type	100
VA2035	20mL Amber Precision Screw Headspace Vial, Round Bottom 22.5* 75mm, 5.0 type	100
VA2025	20mL Clear Precision Screw Headspace Vial, wNWrite-on Spot, Round Bottom, 22.5*75mm, 5.0 type	100



VA101

VA201

VA1035

VA2035

18mm Screw Thread Headspace Caps with Septa



SACA001



SACA002-II

Part No.	Description	Pcs/Pack
SA001	Blue PTFE/White Silicone Septa Φ17.5*1.5mm	100
SA002-II	Red PTFE/White Silicone Septa Φ17.5*1.3mm	100
SA003-II	White PTFE/Blue Transparent Silicone Septa Φ17.5*1.3mm For SPME	100
SA004	Gray PTFE/Red Butyl Septa Φ17.5*1.6mm	100
CA001	18mm Magnetic Precision Screw Metal Cap, 8mm Centre Hole	100
SACA001	Blue PTFE/White Silicone Septa, 18mm Magnetic Precision Screw Metal Cap, 8mm Centre Hole	100
SACA002-II	Red PTFE/White Silicone Septa, 18mm Magnetic Precision Screw Metal Cap, 8mm Centre Hole	100
SACA003-II	White PTFE/Blue Transparent Silicone Septa, 18mm Magnetic Precision Screw Metal Cap, 8mm Centre Hole For SPME	100
SACA004	Gray PTFE/Red Butyl Septa, 18mm Magnetic Precision Screw Metal Cap, 8mm Centre Hole	100
SACA001002	Blue PTFE/White Silicone Septa, 18mm Magnetic Precision Screw Metal Cap, Closed-top	100

※ Septa can be customized, such as color, size, material.



SACA003-I



SACA004



SACA001002

20mm Aluminum Crimp Caps for Headspace Crimp Vials

Description:

The crimp-top headspace vial is a perfect match for various types of autosamplers such as Agilent and Waters, and this crimp top headspace vial has an irreplaceable position in laboratory headspace analysis.

Feature:

- > High-precision processing technology, strict quality control;
- > The bottle has thick walls and withstands high pressure;
- > Perfect sealing to ensure the airtightness of the analyzed samples.

Part No.	Description	Pcs/Pack
VH0613	6mL Clear Crimp-top Headspace Vial, Flat Bottom, 22*38mm(6mL Karl Fisher Vials), 5.0 type	100
VH1017	10mL Clear Crimp-top Headspace Vial, Flat Bottom, 22.5*46mm, 7.0 type	100
VHR1017	10mL Clear Crimp-top Headspace Vial, Round Bottom, 22.5*46mm, 7.0 type	100
VH1013	10mL Clear Crimp-top Headspace Vial, Flat Bottom, 22.5*46mm, 5.0 type	100
VH1035	10mL Amber Crimp-top Headspace Vial, Flat Bottom, 22.5*46mm, 5.0 type	100
VH2017	20mL Clear Crimp-top Headspace Vial, Flat Bottom, 22.5*75mm, 7.0 type	100
VHR2017	20mL Clear Crimp-top Headspace Vial, Round Bottom, 22.8*75mm, 7.0 type	100
VHR2017-I	20mL Clear Crimp-top Headspace Vial, Round Bottom, 22.5*75mm, 7.0 type	100
VH2013	20mL Clear Crimp-top Headspace Vial, Flat Bottom, 22.5*75mm, 5.0 type	100
VHR2013	20mL Clear Crimp-top Headspace Vial, Round Bottom, 22.8*75mm, 5.0 type	100
VH2035	20mL Amber Crimp-top Headspace Vial, Flat Bottom, 22.5*75mm, 5.0 type	100
VHR2035	20mL Amber Crimp-top Headspace Vial, Round Bottom, 22.8*75mm, 5.0 type	100
VH2025	20mL Clear Crimp-top Headspace Vial, w/Write-on Spot, Flat Bottom, 22.5*75mm, 5.0 type	100
VHR2025	20mL Clear Crimp-top Headspace Vial, w/Write-on Spot, Round Bottom, 22.8*75mm, 5.0 type	100



20mm Crimp-top Aluminum Caps with Septa

Part No.	Description	Pcs/Pack
S201	White PTFE/White Silicone Septa Φ20*3mm	100
S202	Nature PTFE/Nature Silicone Septa Φ20*3mm	100
S203	White PTFE/Blue Silicone Septa Φ20*3mm	100
S204	Nature PTFE/Yellow Silicone Septa Φ20*3mm	100
S205	Nature PTFE/Blue Silicone Septa Φ20*3mm	100
MS206	Grey PTFE/Moulded Butyl Septa Φ20*3mm	100
MS207	Grey PTFE/Pharma-Fix Butyl Septa Φ20*3mm	100
C201	20mm Crimp-top Aluminum cap, 9.5mm Centre Hole	100
BC202	20mm Crimp-top Blue Magnetic Aluminum cap, 8mm Centre Hole	100
SC201201	White PTFE/White Silicone Septa, 20mm Crimp-top Aluminum Cap, 9.5mm Centre Hole	100
SCS201201	White PTFE/White Silicone Septa, 20mm Pressure Release Headspace Aluminum Cap, 9.5mm Centre Hole	100
SC209204	White PTFE/Blue Transparent Silicone Septa, 20mm Crimp-top Aluminum Cap, 10mm Centre Hole For 6mL Karl Fisher Vials	100
SBC201202	White PTFE/White Silicone Septa, 20mm Crimp-top Blue Magnetic Aluminum Cap, 8mm Centre Hole	100
SBC203203	White PTFE/Blue Silicone Septa, 20mm Crimp-top Red Magnetic Aluminum Cap, 8mm Centre Hole	100

※ Different color septa, different color caps, more types please consult in detail.

※ Septa can be customized, such as color, size, material.



G201

MS206

MS207



SBC203203

SC208201

SC209204

SGS2021201



Sample Storage Vials

8-60mL Vials

15-425 Screw Neck Vials, PP Caps and Septa, Sample Storage Vials

Description:

The sample storage vials are mainly used on sample storage and transport.

Feature:

- > Made of glass, stable chemical properties;
- > 15-425 International Through Thread Design;
- > Two types of cap and septa are available to suit different needs.

Part No.	Description	Pcs/Pack
V0817	8mL Clear Screw Vial, 15- 425 Thread, 16.6*60mm, 7.0 type	100
V1217	12mL Clear Screw Vial, 15 425 Thread, 18.5*65mm, 7.0 type	100
V0837	8mL Amber Screw Vial, 15 425 Thread, 16.6*60mm, 7.0 type	100
V1237	12mL Amber Screw Vial, 15 -425 Thread, 18.5*65mm, 7.0 type	100

Environmental analysis:

15-425 Screw
8-12mL Vials

TOC analysis
Purge and Trap System

24-400 Screw
20-60mL Vials

24-400 Screw
40mL TOC Vials



15-425 Thread Caps with Septa

Part No.	Description	Pcs/Pack
S151	White PTFE/Red Silicone Septa Φ 13.5*1.5mm	100
S152	Red PTFE/White Silicone Septa Φ 13.5*1.5mm	100
S154	Nature PTFE/Nature Silicone Septa Φ 13.5*1.5mm	100
C151	15-425 Black Screw PP Cap, 9mm Centre Hole	100
C152	15-425 Black Screw PP Cap, Closed-Top	100
SC151151	White PTFE/Red Silicone Septa 13.5*1.5mm, 15-425 Black Screw PP Cap, 9mm Centre Hole	100
SC152151	Red PTFE/White Silicone Septa 13.5*1.5mm, 15-425 Black Screw PP Cap, 9mm Centre Hole	100
SC152153	White PTFE/White Silicone Septa 13.5*1.5mm, 15-425 Black Screw PP Cap, 9mm Centre Hole	100
SC154152	Nature PTFE/Nature Silicone Septa 13.5*1.5mm, 15-425 Black Screw PP Cap, Closed-Top	100

※ Septa and cap can be customized, such as color, size, material.



V1217

V1237

24-400 Screw Neck Vials, EPA Vials, Sample Storage Vials

Description:

These large volume vials are made of 1st borosilicate glass, meeting EPA standard requirement. These Screw Vials are ideal for sample storage and general laboratory use.

24-400 plastic screw cap with centre hole and solid screw cap are available to this vial, We recommend bonded septa caps, avoiding the issue of septa falling out or pushing into the vial.

Feature:

- > Meets EPA and TOC sample analysis standards, suitable for storing various liquids or solids;
- > Made of borosilicate glass (Type I, Class A or B), with excellent chemical stability and heat resistance;
- > 24-400 threaded cap made of polypropylene (PP), with strong chemical resistance and durability.

Part No.	Description	Pcs/Pack
V2017	20mL Clear EPA Screw Vial, 24 -400 Thread, 27.5*57mm, 7.0 type	100
V2015	20mL Clear EPA Screw Vial, 24-400 Thread, 27 .5*57mm,5.0 type	
V2027	20mL Amber EPA Screw Vial, 24 -400 Thread, 27.5*57mm, 7.0 type	100
V2035	20mL Amber EPA Screw Vial, 24-400 Thread, 27 .5*57mm, 5.0 type	
V3017	30mL Clear EPA Screw Vial, 24- 400 Thread, 27.5*75mm,7.0 type	100
V3015	30mL Clear EPA Screw Vial, 24 400 Thread, 27.5*75mm,5.0 type	
V3027	30mL Amber EPA Screw Vial, 24 -400 Thread, 27 .5*75mm, 7.0 type	100
V3035	30mL Amber EPA Screw Vial, 24-400 Thread, 27.5*75mm, 5.0 type	
V4017	40mL Clear EPA Screw Vial, 24- 400 Thread, 27.5*95mm, 7.0 type	100
V4015	40mL Clear EPA Screw Vial, 24 400 Thread, 27 .5*95mm,5.0 type	
V4027	40mL Amber EPA Screw Vial, 24-400 Thread, 27 .5*95mm, 7.0 type	100
V4035	40mL Amber EPA Screw Vial, 24-400 Thread, 27.5*95mm, 5.0 type	
V6017	60mL Clear EPA Screw Vial, 24 400 Thread, 27 .5*140mm, 7.0 type	100
V6015	60mL Clear EPA Screw Vial, 24 400 Thread, 27 .5*140mm, 5.0 type	
V6027	60mL Amber EPA Screw Vial, 24-400 Thread, 27.5* 140mm, 7.0 type	100
V6035	60mL Amber EPA Screw Vial, 24-400 Thread, 27.5* 140mm, 5.0 type	



V2027

V3017

V4027

V6017

24-400 Screw Neck PP Cap with Septa

Part No.	Description	Pcs/Pack
S221-I	Nature PTFE/Nature Silicone septa 22*3mm	100
S223	Gray PTFE/Red Rubber/Gray PTFE septa 22*3mm	100
C221	White Screw PP Cap, 15mm Centre Hole Φ24mm	100
C222	White Screw PP Cap, Closed-top Φ24mm	100
C223	Black Screw PP Cap, 15mm Centre Hole Φ24mm	100
C224	Black Screw PP Cap, Closed-top Φ24mm	100
C225	Red Screw PP Cap, 15mm Centre Hole Φ24mm	100
SC221221	Nature PTFE/Nature Silicone Septa 22*3mm, 24mm White Screw PP Cap, 15mm Centre Hole	100
SC221222	Nature PTFE/Nature Silicone Septa 22*3mm, 24mm White Screw PP Cap, Closed-top	100
SC221223	Nature PTFE/Nature Silicone Septa 22*3mm, 24mm Black Screw PP Cap, 15mm Centre Hole	100
SC221224	Nature PTFE/Nature Silicone Septa 22*3mm, 24mm Black Screw PP Cap, Closed-top	100
SC221225	Nature PTFE/Nature Silicone Septa 22*3mm, 24mm Red Screw PP Cap, 15mm Centre Hole	100

※ Septa and cap can be customized, such as color, size, material.



B-SC221221-A



B-SC221222-A



SC221224

24-400 Screw Neck Vials, PP Caps and Septa, 40mL TOC Vials Purge and Trap Vials 5.0 type



V4015



V4025



V4035



V4045

Description:

Pre-cleaning are not available, vials could be used in TOC analysis after cleaning.
Compatible brands: Agilent, Dionex, Shimadzu, Tekmar, Thermo Scientific, Varian.

Part No.	Description	Pcs/Pack
V4015	40mL 24- 400 Clear Screw Neck Vial, 27.5*95mm 5.0 type, Use for TOC&Purge and Trap System	100
V4025	40mL 24- 400 Clear Screw Neck Vial, w/Write-on Spot, 27.5*95mm 5.0 type, Use for TOC&Purge and Trap System	100
V4035	40mL 24 400 Amber Screw Neck Vial, 27 5*95mm 5.0 type, Use for TOC&Purge and Trap System	100
V4045	40mL 24- 400Amber Screw Neck Vial, , w/Write-on Spot, 27.5*95mm 5.0 type, Use for TOC&Purge and Trap System	100

24-400 PP Caps and Septa Use for Purge and Trap System TOC PP Caps and Septa, Low bleeding

Description:

Compatible brands: Agilent, Dionex, Shimadzu, Tekmar, Thermo Scientific, Varian.

Part No.	Description	Pcs/Pack
S228	Beige PTFE/Nature Silicone Septa 22* 3mm, Low bleeding	100
TOC	PE Dust Cover, used for 24- 400 Caps	100
C221	White Screw PP Cap, 1.5mm Centre Hole Φ24mm	100
C222	White Screw PP Cap, Closed-top Φ24mm	100
C225	Red Screw PP Cap, 1.5mm Centre Hole Φ24mm	100
SC228221	24 -400 PP Screw Cap White, Centre Hole, Beige PTFE/Nature Silicone, Low bleeding	100
B-SC228221	24-400 PP Screw Cap White, Centre Hole, Beige PTFE/White Silicone, Low bleeding, Bonded Screw Caps	100
SC228225	24-400 PP Screw Cap Red, Centre Hole, Beige PTFE/Nature Silicone, Low bleeding	100

※ Septa and cap can be customized, such as color, size, material.



B-SC221221-A



SC223222



SC228221



SC228225

Vials Rack



RV001 & RV002 Vials Rack



RV020&RV040

Part No.	Description	Pcs/Pack
RV001	Vials Rack for 1.5mL Vials, Blue, 50 Holes	1
RV002	Vials Rack for 4mL Vials, Blue, 50 Holes	1
RV020	Vial Rack for Headspace Vial, Φ24mm, white, 40 Holes	1
RV040	Vial Rack for Storage Vial, Φ24mm, white, 40 Holes	1

Hand Crimper

Part No.	Description	Pcs/Pack
AJRC20	Hand Crimper, for 20mm Crimp Caps Seals	1
AJRC20-II	Hand Crimper, for 20mm Crimp Caps Seals, NEW type	1
AJRC11-W	Hand Crimper, for 11mm Crimp Caps Seals, Economy type	1
AJRC20-W	Hand Crimper, for 20mm Crimp Caps Seals, Economy type	1
AJRD11-W	Hand Decrimper, for 11mm Crimp Caps Open, Economy type	1
AJRD20-W	Hand Decrimper, for 20mm Crimp Caps Open, Economy type	1
AJRC20A-W	Hand Crimper, for 20mm Aluminum Plastic Crimp Caps Seals, Economy type	1

※ 8mm, 13mm, 15mm, 18mm Crimper for Flip off Cap and Perfume Bottle are available;

※ Other Size Crimper and Decrimper can be customized.



AJRC11-II



AJRC20



AJRC20-II



AJRC20-W

16mm Test tubes for Water Analysis



Description:

16mm glass test tube with a screw cap is an essential tool in water analysis and various laboratory settings, offering a reliable and convenient solution for handling liquid samples.

Feature:

- > Made of borosili3.3 glass, strong and durable;
- > Stable chemical properties, suitable for lab analytical applications;
- > Storage COD reagents, suitable for Hach instruments;

Part No.	Description	Pcs/Pack
COD-SC	White Screw PC Cap with PTFE Septa for 16mm test tube Closures, HC type	100
COD-SC-I	White Screw PC Cap with PTFE Septa for 16mm test tube Closures, LVB type	100
COD-V50	10mL Clear test tube for Water Analysis, Round Bottom, 16×100mm, HC type	100
COD-VF50	10mL Clear test tube for Water Analysis, Flat Bottom, 16×100mm, HC type	100
COD-VF50-90	9mL Clear test tube for Water Analysis, Flat Bottom, 16×90mm, LVB type	100
COD-V50-125	12mL Clear test tube for Water Analysis, Round Bottom, 16×125mm, HC type	100
COD-V50-150	15mL Clear test tube for Water Analysis, Round Bottom, 16×150mm, HC type	100



25 pieces package

100 pieces package

25mm FTU Test Vials

Description:

For the measurement of suspended particles in liquid samples, mainly used in water quality analysis, environmental monitoring, food and beverage industry, etc.

Feature:

- > High transparency and optical stability;
- > 25mm diameter compatible with most turbidity meter optical systems;
- > For use with colorimeters and spectrophotometers;
- > The threaded cap forms a good seal, keeping the sample sealed before and after measurement to avoid external contamination or evaporation.

Part No.	Description	Pcs/Pack
FTU-VF50-60	20mL Water Sample Cell with Cap, Clear, 25×60mm Flat Bottom	6
FTU-VF50-95	30mL Water Sample Cell with Cap, Clear, 25×95mm Flat Bottom	6



20mL FTU-VF50-60



30mL FTU-VF50-60

13&16mm Culture Tubes

Description:

Widely used in microbiology, cell biology, chemistry, and other research fields.

Feature:

- > Threaded Design: standard 13mm/16mm thread, plastic screw cap ensure a secure seal;
- > Glass Material: Made of borosili 3.3 glass, offering excellent chemical stability, high temperature resistance, and corrosion resistance;
- > High Transparency: Facilitates easy observation of the growth status of the culture.

Part No.	Description	Pcs/Pack
CT-F13-SC	PTFE Septa for 13mm Culture Tube Closures, Black Screw Cap, Closed-top	100
CT-F16-SC	PTFE Septa for 16mm Culture Tube Closures, Black Screw Cap, Closed-top	100
CT-F13-V50	8mL Screw Tube, Culture, 13×100MM, W/Patch	100
CT-F16-V51	10mL Screw Tube, Culture, 16×100MM, Without Writing Patch	100
CT-F16-V51-125	12mL Screw Tube, Culture, 16×125MM, Without Writing Patch	100
CT-F16-V51-150	15mL Screw Tube, Culture, 16×150MM, Without Writing Patch	100

※ Septa and septa can be customized, such as color, size, material.



CT-F13-V50

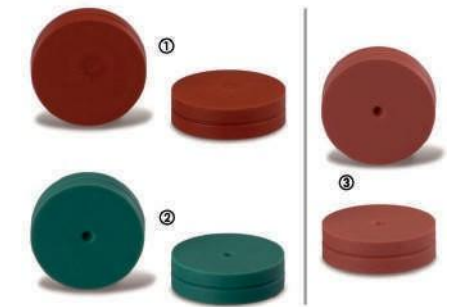


CT-F16-V51-125

GC Septa



GC septa



GC septa

Feature:

- > Universal, longlife GC-Septa;
- > Suitable for inlet temperatures of up to 340° C;
- > Low bleeding (release of Siloxanes);
- > Ready-to-use; no further pre-treatment necessary.

Part No.	Description	Pcs/Pack
GCS01	GC Plug for Shimadzu GCs, Thermolite Color,Φ5.5*7.5mm, Temperature Resistant 340° C	25
GCS02	GC Septa, Green Color,Φ11*3mm, Temperature Resistant 250° C	25

※ Different Colors and Sizes of Septa can be Customized.



GC septa

25↑

Special Septa Customization

GL32/GL45 septa Customized



Vial Septa Customized

We can supply All kinds of rubber septa customized services, such as Color, Size, Thickness, Durometer.



Syringe Filter selection

Diameter	Sample Volume	Filter safety pressure value
13mm	≤ 10mL	115 psi (7.9 bar)
25mm	≤ 100mL	72 psi (5 bar)
33mm	≤ 150mL	90 psi (6.2bar)

Type & Feature of Filter Membrane

Membrane Type	Feature	Application
Nylon	<ul style="list-style-type: none"> With natural hydrophilicity; No need to soak before use, uniform pore size, good mechanical strength; 	Suitable for most laboratory samples; HPLC samples;
PVDF	<ul style="list-style-type: none"> Hydrophobic membrane; Does not absorb moisture, easy to maintain constant weight; Resistant to heat and can be repeatedly sterilized by hot pressing; Resistant to chemical corrosion and oxidation; 	Biological sample filtration and sample filtration requiring high protein recovery;
PTFE	<ul style="list-style-type: none"> Good chemical resistance; High temperature resistance, strong acid and strong alkali resistance; hydrophilic and hydrophobic membranes are available; 	Suit for corrosive organic solvents, strong alkalis and hot solutions;
PP	<ul style="list-style-type: none"> Hydrophobic Nature Chemical Resistance High Flow Rate and Low Extractables 	Beneficial for rapid filtration of large volumes of samples, such as chemistry and life science research;
PES	<ul style="list-style-type: none"> High solvent recovery rate and low residual volume; High processing capacity; Extremely high microbial removal capacity; Low protein adsorption, low extractables 	For filtration of high temperature liquids; First choice for ion chromatography samples;
MCE	<ul style="list-style-type: none"> High porosity, good interception effect Not resistant to strong acid, strong alkali solutions and most organic solvents 	Suitable for filtration of water and aqueous solutions
CA	<ul style="list-style-type: none"> Natural hydrophilicity; Low protein adhesion; Uniform pore size structure; 	Suitable for aqueous solution processing, biological analysis, clinical analysis;
GF	<ul style="list-style-type: none"> Natural hydrophobicity Large flux; Large dirt holding capacity Good mechanical strength 	Widely used in specific gravity analysis and high temperature gas filtration that require burning, water pollution monitoring, cell collection, liquid scintillation counting, and air pollution monitoring

HPLC Syringe Filter



Feature:

- > Efficient Filtration: Prevents blockages and reduces wear on chromatography equipment;
- > Low Dissolution: Polycarbonate housing ensures sample purity;
- > Widely Use: Suitable for pharmaceutical, environmental, biotech, food, and agriculture labs.

Part No.	Description	Pcs/Pack
FN1322 FN1345	13mm 0.22µm Nylon Syringe Filter, Green 13mm 0.45µm Nylon Syringe Filter, Green	100
FN2522 FN2545	25mm 0.22µm Nylon Syringe Filter, Green 25mm 0.45µm Nylon Syringe Filter, Green	100
FN3322 FN3345	33mm 0.22µm Nylon Syringe Filter, Green 33mm 0.45µm Nylon Syringe Filter, Green	100
FF1322 FF1345	13mm 0.22µm Hydrophilic PVDF Syringe Filter, Blue 13mm 0.45µm Hydrophilic PVDF Syringe Filter, Blue	100
FF2522 FF2545	25mm 0.22µm Hydrophilic PVDF Syringe Filter, Blue 25mm 0.45µm Hydrophilic PVDF Syringe Filter, Blue	100
FF3322 FF3345	33mm 0.22µm Hydrophilic PVDF Syringe Filter, Blue 33mm 0.45µm Hydrophilic PVDF Syringe Filter, Blue	100
FE1322I FE1345I	13mm 0.22µm Hydrophilic PTFE Syringe Filter, Red 13mm 0.45µm Hydrophilic PTFE Syringe Filter, Red	100
FE2522I FE2545I	25mm 0.22µm Hydrophilic PTFE Syringe Filter, Red 25mm 0.45µm Hydrophilic PTFE Syringe Filter, Red	100
FE3322I FE3345I	33mm 0.22µm Hydrophilic PTFE Syringe Filter, Red 33mm 0.45µm Hydrophilic PTFE Syringe Filter, Red	100
FE1322 FE1345	13mm 0.22µm Hydrophobic PTFE Syringe Filter, Red 13mm 0.45µm Hydrophobic PTFE Syringe Filter, Red	100

Part No.	Description	Pcs/Pack
FE2522 FE2545	25mm 0.22µm Hydrophobic PTFE Syringe Filter, Red 25mm 0.45µm Hydrophobic PTFE Syringe Filter, Red	100
FE3322 FE3345	33mm 0.22µm Hydrophobic PTFE Syringe Filter, Red 33mm 0.45µm Hydrophobic PTFE Syringe Filter, Red	100
FS1322 FS1345	13mm 0.22µm PES Syringe Filter, Yellow 13mm 0.45µm PES Syringe Filter, Yellow	100
FS2522 FS2545	25mm 0.22µm PES Syringe Filter, Yellow 25mm 0.45µm PES Syringe Filter, Yellow	100
FS3322 FS3345	33mm 0.22µm PES Syringe Filter, Yellow 33mm 0.45µm PES Syringe Filter, Yellow	100
FM1322 FM1345	13mm 0.22µm MCE Syringe Filter, Orange 13mm 0.45µm MCE Syringe Filter, Orange	100
FM2545	25mm 0.45µm MCE Syringe Filter, Orange	100
FM3322 FM3345	33mm 0.22µm MCE Syringe Filter, Orange 33mm 0.45µm MCE Syringe Filter, Orange	100
FP1322 FP1345	13mm 0.22µm PP Syringe Filter, White 13mm 0.45µm PP Syringe Filter, White	100
FP2522 FP2545	25mm 0.22µm PP Syringe Filter, White 25mm 0.45µm PP Syringe Filter, White	100
FP3322 FP3345	33mm 0.22µm PP Syringe Filter, White 33mm 0.45µm PP Syringe Filter, White	100
FC1322 FC1345	13mm 0.22µm Cellulose Acetate Syringe Filter, Orange 13mm 0.45µm Cellulose Acetate Syringe Filter, Orange	100
FC2522 FC2545	25mm 0.22µm Cellulose Acetate Syringe Filter, Orange 25mm 0.45µm Cellulose Acetate Syringe Filter, Orange	100
FC3322 FC3345	33mm 0.22µm Cellulose Acetate Syringe Filter, Orange 33mm 0.45µm Cellulose Acetate Syringe Filter, Orange	100

※ We can supply All kinds of Syringe Filter customized services, such as **Color, Size, Diameter, Membrane material.**

Sterile Syringe filter



Part No.	Description	Pk
FN1322S	13mm 0.22µm Nylon Sterile Syringe Filter, Green	100
FN1345S	13mm 0.45µm Nylon Sterile Syringe Filter, Green	
FN2522S	25mm 0.22µm Nylon Sterile Syringe Filter, Green	100
FN2545S	25mm 0.45µm Nylon Sterile Syringe Filter, Green	
FN3322S	33mm 0.22µm Nylon Sterile Syringe Filter, Green	100
FN3345S	33mm 0.45µm Nylon Sterile Syringe Filter, Green	
FF1322S	13mm 0.22µm Hydrophilic PVDF Sterile Syringe Filter, Blue	100
FF1345S	13mm 0.45µm Hydrophilic PVDF Sterile Syringe Filter, Blue	
FF2522S	25mm 0.22µm Hydrophilic PVDF Sterile Syringe Filter, Blue	100
FF2545S	25mm 0.45µm Hydrophilic PVDF Sterile Syringe Filter, Blue	
FF3322S	33mm 0.22µm Hydrophilic PVDF Sterile Syringe Filter, Blue	100
FF3345S	33mm 0.45µm Hydrophilic PVDF Sterile Syringe Filter, Blue	
FE1322IS	13mm 0.22µm Hydrophilic PTFE Sterile Syringe Filter, Red	100
FE1345IS	13mm 0.45µm Hydrophilic PTFE Sterile Syringe Filter, Red	
FE2522IS	25mm 0.22µm Hydrophilic PTFE Sterile Syringe Filter, Red	100
FE2545IS	25mm 0.45µm Hydrophilic PTFE Sterile Syringe Filter, Red	
FE3322IS	33mm 0.22µm Hydrophilic PTFE Sterile Syringe Filter, Red	100
FE3345IS	33mm 0.45µm Hydrophilic PTFE Sterile Syringe Filter, Red	
FE1322S	13mm 0.22µm Hydrophobic PTFE Sterile Syringe Filter, Red	100
FE1345S	13mm 0.45µm Hydrophobic PTFE Sterile Syringe Filter, Red	

Part No.	Description	Pk
FE2522S	25mm 0.22µm Hydrophobic PTFE Sterile Syringe Filter, Red	100
FE2545S	25mm 0.45µm Hydrophobic PTFE Sterile Syringe Filter, Red	
FE3322S	33mm 0.22µm Hydrophobic PTFE Sterile Syringe Filter, Red	100
FE3345S	33mm 0.45µm Hydrophobic PTFE Sterile Syringe Filter, Red	
FS1322S	13mm 0.22µm PES Sterile Syringe Filter, Yellow	100
FS1345S	13mm 0.45µm PES Sterile Syringe Filter, Yellow	
FS2522S	25mm 0.22µm PES Sterile Syringe Filter, Yellow	100
FS2545S	25mm 0.45µm PES Sterile Syringe Filter, Yellow	
FS3322S	33mm 0.22µm PES Sterile Syringe Filter, Yellow	100
FS3345S	33mm 0.45µm PES Sterile Syringe Filter, Yellow	
FM1322S	13mm 0.22µm MCE Sterile Syringe Filter, Orange	100
FM1345S	13mm 0.45µm MCE Sterile Syringe Filter, Orange	
FM2522S	25mm 0.22µm MCE Sterile Syringe Filter, Orange	100
FM2545S	25mm 0.45µm MCE Sterile Syringe Filter, Orange	
FM3322S	33mm 0.22µm MCE Sterile Syringe Filter, Orange	100
FM3345S	33mm 0.45µm MCE Sterile Syringe Filter, Orange	
FP1322S	13mm 0.22µm PP Sterile Syringe Filter, White	100
FP1345S	13mm 0.45µm PP Sterile Syringe Filter, White	
FP2522S	25mm 0.22µm PP Sterile Syringe Filter, White	100
FP2545S	25mm 0.45µm PP Sterile Syringe Filter, White	
FP3322S	33mm 0.22µm PP Sterile Syringe Filter, White	100
FP3345S	33mm 0.45µm PP Sterile Syringe Filter, White	
FC1322S	13mm 0.22µm Cellulose Acetate Sterile Syringe Filter, Orange	100
FC1345S	13mm 0.45µm Cellulose Acetate Sterile Syringe Filter, Orange	
FC2522S	25mm 0.22µm Cellulose Acetate Sterile Syringe Filter, Orange	100
FC2545S	25mm 0.45µm Cellulose Acetate Sterile Syringe Filter, Orange	
FC3322S	33mm 0.22µm Cellulose Acetate Sterile Syringe Filter, Orange	100
FC3345S	33mm 0.45µm Cellulose Acetate Sterile Syringe Filter, Orange	

※ We can supply All kinds of Syringe Filter customized services, such as **Color, Size, Diameter, Membrane material.**

47mm Sterile gridded Membrane Filters

Description:

Mixed cellulose membrane filters are made from a blend of cellulose nitrate and cellulose acetate that are processed to have an alpha cellulose content as low as 98%. These cellulose filter papers can be used for general filtration with particle retention levels as low as 2.5µm.

Different categories of cellulose membrane filter has varying degrees of purity, hardness, and chemical resistance.

Feature:

- > Particle retention rating at 98% efficiency;
- > High sample flow rate and strong loading capacity;
- > Does not contain surfactants and will not contaminate samples.



Membrane Filter

Description:

Membrane filter is one of the commonly used consumables in laboratories. Common microporous membrane filter include NY, PTFE, PVDF, MCE, CA and so on.

Please choose a reasonable filter membrane according to your needs.



Laboratory Reagent Bottle



Feature:

- > Provided with well-legible scale and large field for description (indication of the content);
- > The outlet ring enables for clean work (no drops);
- > Typically used for storage and transfer of photosensitive substances.

Round Reagent Bottle with Blue Cap:

Part No	Capacity	GL	Color	d (mm)	h (mm)	Package
G25-V2523 G25-V2545	25ml	25	Amber/Clear	36	74	240 Pcs/Carton
G25-V5023 G25-V5045	50ml	32	Amber/Clear	46	91	192 Pcs/Carton
G45-V10023 G45-V10045	100ml	45	Amber/Clear	56	105	120 Pcs/Carton
G45-V25023 G45-V25045	250ml	45	Amber/Clear	70	143	80 Pcs/Carton
G45-V50023 G45-V50045	500ml	45	Amber/Clear	86	181	48 Pcs/Carton
G45-V100023 G45-V100045	1000ml	45	Amber/Clear	101	230	24 Pcs/Carton
G45-V200023 G45-V200045	2000ml	45	Amber/Clear	136	265	12 Pcs/Carton
G45-V500023 G45-V500045	5000ml	45	Amber/Clear	181	336	6 Pcs/Carton
G45-V1000023 G45-V1000045	10000ml	45	Amber/Clear	227	416	4 Pcs/Carton

※ Plastic cap (blue), Maximum operational temperature +140° C.

※ Red, Yellow, Orange, Green, White, black color are available; customized the color as your requirement;

● **Wide Mouth Round Reagent Bottle with GL80 Cap:**



Part No	Capacity	GL	Color	d (mm)	h (mm)	Package
G45-VS10027 G45-VS10045	100ml	45	Amber/Clear	50	109	120 Pcs/Carton
G45-VS25027 G45-VS25045	250ml	45	Amber/Clear	64	143	80 Pcs/Carton
G45-VS50027 G45-VS50045	500ml	45	Amber/Clear	78	181	48 Pcs/Carton
G45-VS100027 G45-VS100045	1000ml	45	Amber/Clear	94	222	24 Pcs/Carton

※ Plastic cap (blue), Maximum operational temperature +140° C.

※ Red, Yellow, Orange, Green, White, black color are available; customized the color as your requirement.

Part No	Capacity	GL	Color	d (mm)	h (mm)	Package
G80-V25027	250ml	80	Clear	95	110	60 Pcs/Carton
G80-V50027	500ml	80	Clear	101	153	48 Pcs/Carton
G80-V100027	1000ml	80	Clear	101	223	24 Pcs/Carton

※ Plastic cap (blue), Maximum operational temperature +140° C.

※ Red, Yellow, Orange, Green, White, black color are available; customized the color as your requirement.

● **Square Reagent Bottle with Cap:**



● **Wide Mouth Glass Bottle :**



Part No	Description	Color	Package
WMA30	30ml Wide Mouth Glass Bottle with Glass Stopper	Amber/Clear	240Pcs/Carton
WMA60	60ml Wide Mouth Glass Bottle with Glass Stopper	Amber/Clear	192Pcs/Carton
WMA125	125ml Wide Mouth Glass Bottle with Glass Stopper	Amber/Clear	120Pcs/Carton
WMA250	250ml Wide Mouth Glass Bottle with Glass Stopper	Amber/Clear	80Pcs/Carton
WMA500	500ml Wide Mouth Glass Bottle with Glass Stopper	Amber/Clear	48Pcs/Carton
WMA1000	1000ml Wide Mouth Glass Bottle with Glass Stopper	Amber/Clear	24Pcs/Carton

1.5mL/2mL Vials Package



1.5mL-2mL Package PP 1.5mL-2mL Package NP3 1.5mL-2mL Package NP2 1.5mL-2mL Package NP1



Vials & Closures 2 in 1 Kits

4-12mL Vials Package(13-425, 15-425)



4-12mL Vial Package 13-425 Closures Package

Headspace Vials Package



HS Vial Package HS Vials Package 20mL HS Vial package

Headspace Caps with Septa Package

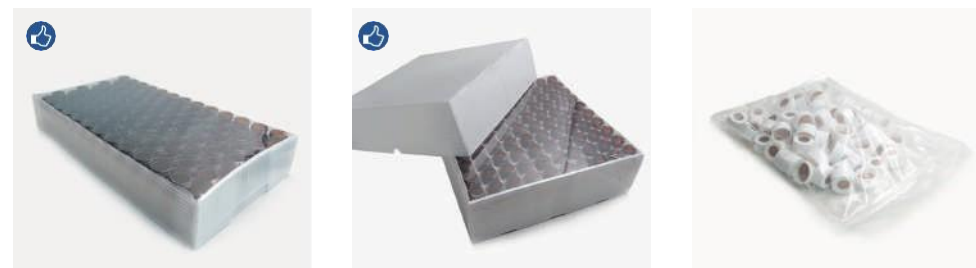


18mm Screw Closures Package 18mm Screw Closures Package



20mm Crimp Closures Package 20mm Crimp Closures Package

24- 400 Screw Vials Package



20-30-40-60mL Storage Vials Package 40mL TOC Vials Package 24-400 Closures Package

* Remarks: General Package New Package