

DW-AL001

Technical features

- The bed surface of the stretcher is made of waterproof foamed cushion, the back is adjustable which makes the wounded feel comfortable.
- The mechanical folding legs are controlled by the handles on both sides.
- The stretcher can be locked up after being aboard through the chute.
- The stretcher can be arbitrarily adjusted by pneumatic spring, it can converted into a chair.
- It is made of high-strength Aluminium alloy materials. It is characterised by its being anti-corrosion, use-safely and easy for sterilization and clean.
- It is mainly used in limited space transporting patients, such as lift in hospital, ambulance, city road etc.
- The size of castor: $\varnothing 125\text{mm}$.

技术特点

- 泡沫软垫采用防水工艺制作，靠背角度可调节，使伤病员躺卧舒适。
- 本担架折腿机械结构，通过右手柄控制。
- 担架上车后担架与救护车的固定装置应牢固锁定。
- 本担架可折叠成椅子式。
- 采用铝合金材料制成，它具有耐腐、易消毒清洗、安全等优点。
- 主要适合在有限的空间里转移病人，如医院电梯、救护车、飞机及城市道路救护。
- 轮子尺寸： $\varnothing 125\text{mm}$ 。



DW-AL002

Technical features

- The stretcher height can be adjusted.
- This machine is very convenient, one person is enough to send the patient.
- The bed surface is made of foamed cushion and adjusted back, making the wounded feel comfortable.
- This stretcher is with the safety belt.
- When transfer the patients they must be locked.

技术特点

- 担架高度可随意调节，调节高度时按动手柄。
- 仅需一名救护人员把病人推上救护车。
- 采用防水海绵软垫，靠背角度和腿部可调节，使伤病员躺卧舒适。
- 担架带有安全带。
- 本担架配有保险锁，运送病人时必须锁止。



Model 型号	Product Size 展开尺寸 (L x W x H)	Foldaway 折叠尺寸 (L x W x H)	Maximum angle of the back 靠背最大角度	Net weight 自重	Load Limit 承重	Packing 纸箱包装		
						Quantity 数量	Size 尺寸(L x W x H)	G.W 毛重
DW-AL001	195 x 56 x 86cm	195 x 56 x 25cm	60°	30kg	180kg	1	198 x 62 x 27cm	40kg
DW-AL002	193 x 56 x 84cm	195 x 56 x 30cm	-	29kg	220kg	1	198 x 62 x 34cm	40kg

DW-AL003/003A

Technical features

- The product is made of high quality aluminum alloy material, with the foam mattress, easy to clean and disinfect.
- The back can be adjustable.
- At least needs two peoper carry the stretcher into the ambulance.
- Two side pull rings can help reduce the reduce the intensity for the operators.
- With the fixture, can lock the strecher after inside the ambulance.

技术特点

- 该产品采用优质铝合金材料制成，配备海绵软垫，易清洗消毒。
- 头部靠背角度可以调节。
- 至少需两人将担架抬入救护车。
- 担架两端设有拉环，可减轻运送病人时的劳动强度。
- 担架上车后，配有固定装置，将其锁定。



DW-AL003



DW-AL003A



Model 型号	Product Size 展开尺寸 (L x W x H)	Maximum angle of the back 靠背最大角度	Net weight 自重	Load Limit 承重	Packing 纸箱包装		
					Quantity 数量	Size 尺寸(L x W x H)	G.W 毛重
DW-AL003	195 x 55 x 48cm	60°	27kg	159kg	1	195x 63 x 33cm	31kg
DW-AL003A	194 x 55 x 48cm	60°	25kg	159kg	1	194x 63 x 33cm	29kg

DW-AL004/005

Technical features

- This automatic loading stretcher is our latest product, it's made of high-strength aluminum alloy thick-wall pipes.
- The bed surface is made of foamed cushion and the adjustable back making the wounded feel comfortable.
- The machine is very convenient, one person is enough to send the patient to the ambulance stretcher.
- The mechanical foldaway legs are controlled by the handles on both ends of the stretcher.
- And the legs can be folded under the stretcher automatically when loading into the vehicle.
- Also the stretcher can be locked by the fixing devices when on the ambulance car.
- This type of stretcher is characterized by its being light, durable antiseptic easy for sterilization.

技术特点

- 采用高质铝合金材料，配接件铝合金压铸。
- 采用海绵软垫，背部角度可调，使伤病员躺卧舒适。
- 仅需一名救护人员把病人推上救护车。
- 折腿机械结构，通过左右手柄控制。
- 上车时腿部可自动折叠。
- 固定支架与救护车相固定，担架通过滑道上车后可锁定。
- 此单架重量轻，防腐，易消毒清洗。



DW-AL004



DW-AL005



Model 型号	Product Size 展开尺寸 (L x W x H)	Foldaway 折叠尺寸 (L x W x H)	Maximum angle of the back 靠背最大角度	Net weight 自重	Load Limit 承重	Packing 纸箱包装		
						Quantity 数量	Size 尺寸(L x W x H)	G.W 毛重
DW-AL004	190 x 55 x 92cm	190 x 55 x 25cm	75°	40kg	159kg	1	195 x 62 x 26cm	46kg
DW-AL005	190 x 55 x 92cm	190 x 55 x 26cm	75°	37kg	159kg	1	195 x 62 x 28cm	43kg

DW-AL006/007

Technical features

- This automatic loading stretcher is our latest product, it's made of high-strength aluminum alloy thick-wall pipes.
- The bed surface is made of foamed cushion and the adjustable back making the wounded feel comfortable.
- The machine is very convenient, one person is enough to send the patient to the ambulance stretcher.
- The mechanical foldaway legs are controlled by the handles on both ends of the stretcher.
- And the legs can be folded under the stretcher automatically when loading into the vehicle.
- Also the stretcher can be locked by the fixing devices when on the ambulance car.
- This type of stretcher is characterized by its being light, durable antiseptic easy for sterilization.

技术特点

- 采用高质铝合金材料，配接件铝合金压铸。
- 采用海绵软垫，背部角度可调，使伤病员躺卧舒适。
- 仅需一名救护人员把病人推上救护车。
- 折腿机械结构，通过左右手柄控制。
- 上车时腿部可自动折叠。
- 固定支架与救护车相固定，担架通过滑道上车后可锁定。
- 此单架重量轻，防腐，易消毒清洗。



DW-AL006



DW-AL007



Model 型号	Product Size 展开尺寸 (L x W x H)	Foldaway 折叠尺寸 (L x W x H)	Maximum angle of the back 靠背最大角度	Net weight 自重	Load Limit 承重	Packing 纸箱包装		
						Quantity 数量	Size 尺寸(L x W x H)	G.W 毛重
DW-AL006	192 x 55 x 98cm	192 x 55 x 36cm	75°	39kg	159kg	1	198 x 62 x 38cm	45kg
DW-AL007	190 x 55 x 92cm	192 x 55 x 26cm	75°	39kg	159kg	1	195 x 62 x 28cm	42kg



Foldaway Stretcher 折叠担架

DW-F001/F001X

Technical features

- The stretcher is made of high-strength aluminum alloy and oxford leather materials. Used for carrying patients and wounded persons.

技术特点

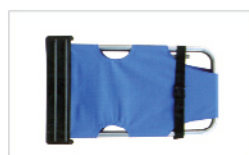
- 本担架采用高强度铝合金材料和牛津革制成，运送伤病员使用。



DW-F001



DW-F001X



Model 型号	Product Size 展开尺寸 (L x W x H)	Foldaway 折叠尺寸 (L x W x H)	Net weight 自重	Load Limit 承重	Packing 纸箱包装		
					Quantity 数量	Size 尺寸(L x W x H)	G.W毛重
DW-F001	220 x 52 x 12cm	110 X 52 X 15cm	6kg	159kg	1	120 x 54 x 18cm	7kg
DW-F001X	186 x 51 x 8cm	92 x 51 x 10cm	4kg	159kg	2	97 x 55 x 19cm	9kg

DW-F001B/F002

Technical features

- The stretcher is made of high-strength aluminum alloy and Oxford materials.
- It characterised by its being light-weighted, small-sized and easy-carried, Use-safety and easy for sterilization It's mainly used for field rescue.

技术特点

- 本担架带支撑腿，采用高强度铝合金材料和牛津革担架面制成。
- 它具有重量轻，体积小，携带方便、使用安全、易消毒清洗等优点，主要适用于野外救护。



DW-F001B



DW-F002



Model 型号	Product Size 展开尺寸 (L x W x H)	Foldaway 折叠尺寸 (L x W x H)	Net weight 自重	Load Limit 承重	Packing 纸箱包装		
					Quantity 数量	Size 尺寸(L x W x H)	G.W毛重
DW-F001B	186 x 51 x 25cm	92 x 51 x 13cm	7kg	159kg	2	97 x 55 x 20cm	17kg
DW-F002	208 x 55 x 13cm	104 x 17 x 9cm	5kg	159kg	2	108 x 20 x 20cm	21kg

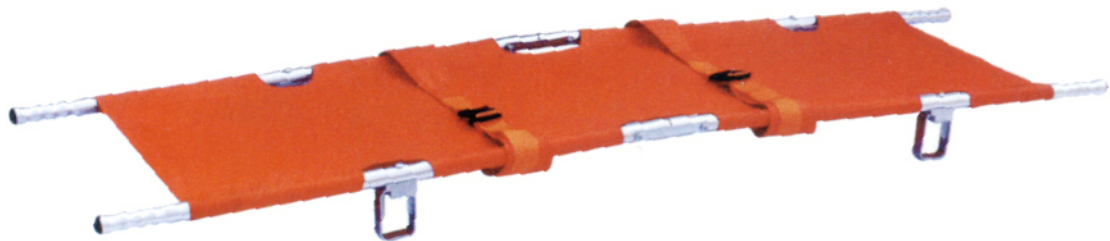
DW-F002X/F003

Technical features

- It is the ideal product for mass casualty and catastrophic situations.
- Constructed of Aluminium alloy, it conveniently and quickly deploys onto the rescue scene to accommodate multiple victims.
- Once finished, it conveniently stacks onto itself to provide the most compact storage available. The PVC cover is durable, fire retardant, and resistant to blood and bodily fluids.

技术特点

- 结构由铝合金制成，可以迅速并且便捷的部署到不同的救援现场，适用于各种遇难者。
- 使用结束后，该担架可以堆积起来，提供最紧凑的存储空间。
- 担架面采用阻燃PVC面料，同时可避免被血液和体液污染。



DW-F002X



DW-F003



Model 型号	Product Size 展开尺寸 (L x W x H)	Foldaway 折叠尺寸 (L x W x H)	Net weight 自重	Load Limit 承重	Packing 纸箱包装		
					Quantity 数量	Size 尺寸(L x W x H)	G.W毛重
DW-F002X	217 x 53 x 14cm	108 x 17 x 10cm	6kg	159kg	2	111 x 21 x 21cm	14kg
DW-F003	180 x 50 x 18cm	-	5kg	159kg	1	190 x 52 x 26cm	6.5kg

DW-F004/F005

Technical features

- The stretcher is made of high-strength aluminum alloy and oxford leather materials. It is characterised by its being light-weight, small-sized, easy-carried, use-safely and easy for sterilization. It's mainly used for hospitals, sports, ambulance and battle fields carrying patients and wounded persons.

技术特点

- 本担架采用高强度铝合金材料和牛津革制成，具有重量轻，体积小，携带方便、使用安全、易消毒，清洗等优点，主要适用医院、公共场所、救护车及部队战地运送伤病员。



DW-F004



DW-F005



Model 型号	Product Size 展开尺寸 (L x W x H)	Foldaway 折叠尺寸 (L x W x H)	Net weight 自重	Load Limit 承重	Packing 纸箱包装		
					Quantity 数量	Size 尺寸(L x W x H)	G.W毛重
DW-F004	200 x 56 x 14cm	200 x 10 x 14cm	4.2kg	159kg	1	213 x 13 x 18cm	5.2kg
DW-F005	185 x 50 x 20cm	92 x 50 x 9cm	6kg	159kg	1	98 x 54 x 18cm	7kg

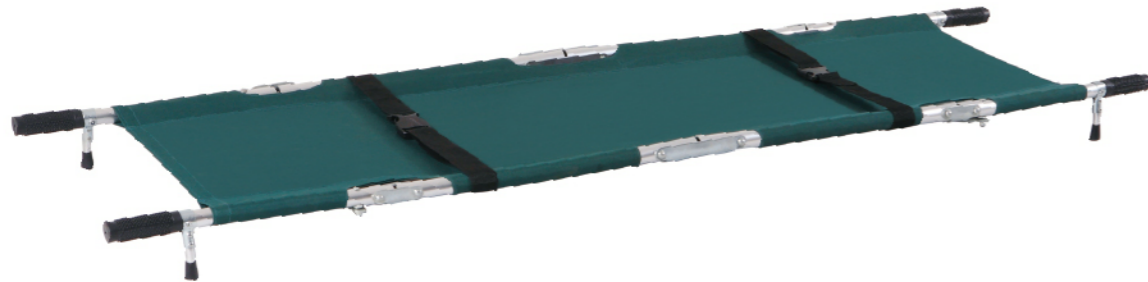
DW-F006/F006X

Technical features

- The stretcher is made of high-strength aluminum alloy and oxford leather materials. It is characterised by its being light-weight, small-sized, easy-carried, use-safely and easy for sterilization. It's mainly used for hospitals, sports, ambulance and battle fields carrying patients and wounded person.

技术特点

- 本担架采用高强度铝合金材料和牛津革制成，具有重量轻，体积小，携带方便、使用安全、易消毒，清洗等优点，主要适用医院、公共场所、救护车及部队战地运送伤病员。



DW-F006



DW-F006X



Model 型号	Product Size 展开尺寸 (L x W x H)	Foldaway 折叠尺寸 (L x W x H)	Net weight 自重	Load Limit 承重	Packing 纸箱包装		
					Quantity 数量	Size 尺寸(L x W x H)	G.W毛重
DW-F006	214 x 52 x 12cm	58 x 21 x 16cm	5kg	159kg	1	62 x 28 x 17cm	5.5kg
DW-F006X	216 x 55 x 14cm	56 x 22 x 20cm	8kg	159kg	1	62 x 24 x 28cm	9kg

DW-F007/F007X

Technical features

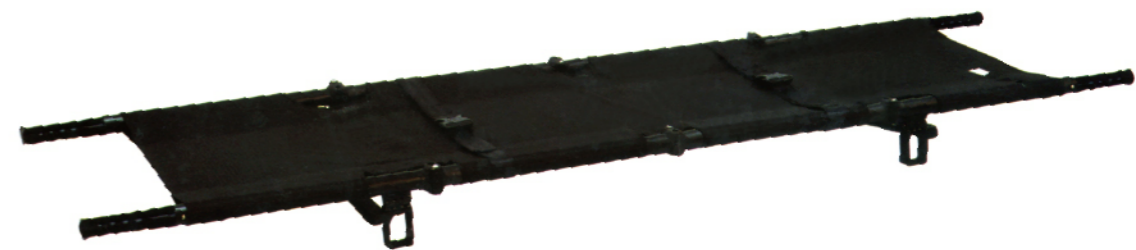
- The stretcher is equipped of outrigger, portable backpack, made of high-strength aluminum alloy and Oxford materials.
- It characterised by its being light-weighted, small-sized and easy-carried, Use-safety and easy for sterilization It's mainly used for field rescue.

技术特点

- 本担架带支撑腿，带手提背包。采用高强度铝合金焊接而成，台面为牛津革和特斯林。
- 它具有重量轻，体积小，携带方便、使用安全、易消毒清洗等优点，主要适用于野外救护。



DW-F007



DW-F007X

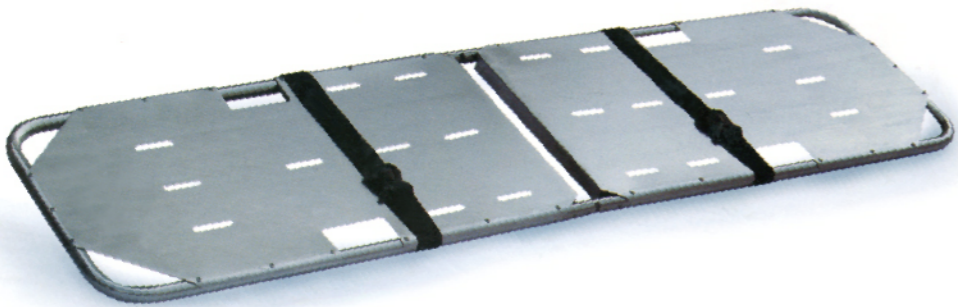


Model 型号	Product Size 展开尺寸 (L x W x H)	Foldaway 折叠尺寸 (L x W x H)	Net weight 自重	Load Limit 承重	Packing 纸箱包装		
					Quantity 数量	Size 尺寸(L x W x H)	G.W毛重
DW-F007	202 x 54 x 16cm	54 x 22 x 20cm	8kg	159kg	1	56 x 24 x 22cm	8.5kg
DW-F007X	228 x 57 x 14.5cm	53 x 22 x 22cm	9.6kg	159kg	1	61 x 25 x 24cm	11.5kg

DW-F008

Technical features

- The main material is high-strength aluminum alloy which is hardened and surface treated.



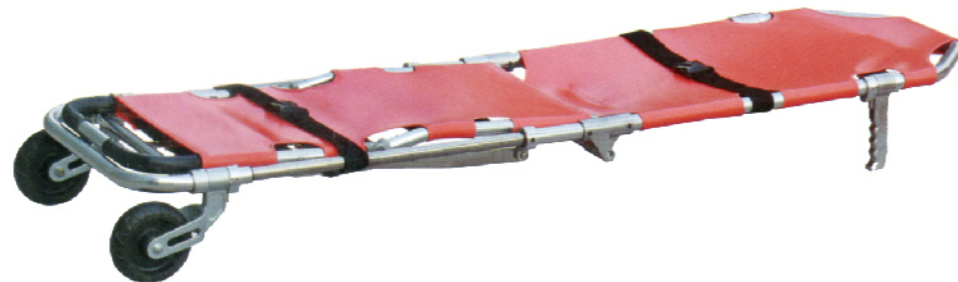
技术特点

- 本折叠担架系列材料均采用高强度铝合金进行硬化和表面处理。

DW-F009

Technical features

- The main material is high-strength aluminum alloy which is hardened and surface treated.
- Stretcher surface is sewn by Oxford leather or laminated PVC sheet.
- Stretcher can be transformed into chair mode.



技术特点

- 本折叠担架系列材料均采用高强度铝合金进行硬化和表面处理。
- 担架面采用牛津革或PVC夹网革缝制而成。
- 担架可变换成椅子模式。



Model 型号	Product Size 展开尺寸 (L x W x H)	Foldaway 折叠尺寸 (L x W x H)	Net weight 自重	Load Limit 承重	Packing 纸箱包装		
					Quantity 数量	Size 尺寸(L x W x H)	G.W毛重
DW-F008	187 x 50 x 4cm	93 x 50 x 11cm	8Kg	159kg	2	98 x 56 x 19cm	17Kg
DW-F009	190 x 53 x 22cm	103 x 53 x 22cm	15Kg	159kg	1	105 x 56 x 25cm	17kg

DW-F010/F010X

Technical features

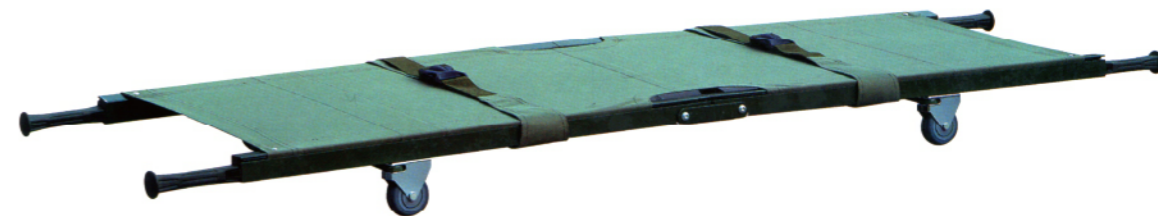
- This stretcher is intensified stretcher, it can be folded with flexible handle, outrigger.
- It is made of high-strength Aluminum Alloy materials. It characterised by its being small-sized use safely and easy for sterilization and clean.
- It's mainly used for battle field and outdoor carrying patients and wounded person.



DW-F010

技术特点

- 本担架为加强型担架，可折叠，配有手把，带支腿。
- 采用高强度铝合金材料制成，它具有体积小、使用安全、易消毒清洗等优点。
- 主要适用于部队野外救护。



DW-F010X



Model 型号	Product Size 展开尺寸 (L x W x H)	Foldaway 折叠尺寸 (L x W x H)	Net weight 自重	Load Limit 承重	Packing 纸箱包装		
					Quantity 数量	Size 尺寸(L x W x H)	G.W毛重
DW-F010	220 x 53 x 14cm	95 x 20 x 9cm	8kg	159kg	1	98 x 21 x 21cm	9.5kg
DW-F010X	220 x 53 x 14cm	95 x 20 x 9cm	10kg	159kg	1	98 x 21 x 11cm	12kg

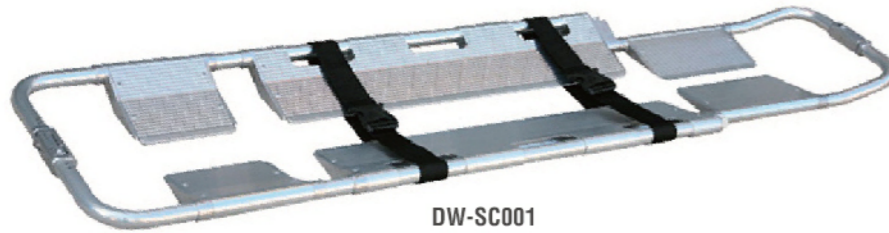
DW-SC001/003/005

Technical features

- It's a separable-type scoop stretcher for ambulance to transfer fractured & serious patients.
- Equipped with a clutch hinge in the middle of both ends, which can separate the stretcher into two parts.
- The stretcher could strengthen the patients at origin place which could reduce the further hurt to the patients.
- The patient can be quickly & easily put in the stretcher and also the stretcher can be taken out from the back of patient without moving the patient.
- The length of the stretcher can be adjusted according to patient's body.
- The foot-end is designed as a narrow-frame structure.
- It is made of high-strength stainless steel, aluminum alloy and PE materials. It characterized by its being light-weighted, small-sized, easy-carried, use-safely and easy for sterilization and clean.
- It's mainly used for hospitals, sports, ambulance and battle fields carrying patients and wounded persons.

技术特点

- 采用分离型刚性结构，转送骨折及重伤病员。
- 两端设有离合装置，使担架分离成左右两部分。
- 本担架可在原地固定病人，减少对病人的二次伤害。
- 不移动病人的情况下，迅速将病人铲入或从病人体下抽出担架。
- 担架长度根据病人身长可作三档调节。
- 担架一端(脚部)采用窄框架结构。
- 采用高强度不锈钢、PE、铝合金材料制成，它具有重量轻，体积小，携带方便、使用安全、易消毒清洗等优点。
- 主要适用医院、公共场所、救护车运送伤病员。



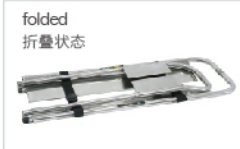
DW-SC001
Aluminum Alloy



DW-SC005



DW-SC003
Aluminum Alloy



folded
折叠状态



deleached
分离状态

Model 型号	Product Size 展开尺寸 (L x W x H)	Foldaway 折叠尺寸 (L x W x H)	Net weight 自重	Load Limit 承重	Packing 纸箱包装		
					Quantity 数量	Size 尺寸(L x W x H)	G.W 毛重
DW-SC001	150 x 44 x 7cm	150 x 44 x 7cm	7kg	180kg	1	152 x 46 x 9cm	9kg
DW-SC003	210 x 44 x 7cm	120 x 44 x 9cm	8kg	180kg	1	122 x 46 x 11cm	10kg
DW-SC005	211 x 42 x 7cm	121 x 42 x 10cm	9kg	180kg	1	123 x 44 x 12cm	10kg

DW-SC002/004/007

Technical features

- It's a separable-type scoop stretcher for ambulance to transfer fractured & serious patients.
- Equipped with a clutch hinge in the middle of both ends, which can separate the stretcher into two parts.
- The stretcher could strengthen the patients at origin place which could reduce the further hurt to the patients.
- The patient can be quickly & easily put in the stretcher and also the stretcher can be taken out from the back of patient without moving the patient.
- The length of the stretcher can be adjusted according to patient's body.
- The foot-end is designed as a narrow-frame structure.
- It is made of high-strength stainless steel, aluminum alloy and PE materials. It characterized by its being light-weighted, small-sized, easy-carried, use-safely and easy for sterilization and clean.
- It's mainly used for hospitals, sports, ambulance and battle fields carrying patients and wounded persons.

技术特点

- 采用分离型刚性结构，转送骨折及重伤病员。
- 两端设有离合装置，使担架分离成左右两部分。
- 本担架可在原地固定病人，减少对病人的二次伤害。
- 不移动病人的情况下，迅速将病人铲入或从病人体下抽出担架。
- 担架长度根据病人身长可作三档调节。
- 担架一端(脚部)采用窄框架结构。
- 采用高强度不锈钢、PE、铝合金材料制成，它具有重量轻，体积小，携带方便、使用安全、易消毒清洗等优点。
- 主要适用医院、公共场所、救护车运送伤病员。



DW-SC002
Stainless Steel



DW-SC007
(PE)



DW-SC004
(PE)



deleached
分离状态



folded
折叠状态



deleached
分离状态

Model 型号	Product Size 展开尺寸 (L x W x H)	Foldaway 折叠尺寸 (L x W x H)	Net weight 自重	Load Limit 承重	Packing 纸箱包装		
					Quantity 数量	Size 尺寸(L x W x H)	G.W 毛重
DW-SC002	210 x 44 x 7cm	120 x 44 x 9cm	8kg	180kg	1	122 x 46 x 11cm	10kg
DW-SC004	162 x 44 x 7cm	120 x 44 x 7cm	7kg	180kg	1	122 x 46 x 9cm	8kg
DW-SC007	186 x 43 x 7cm	-	9kg	205kg	1	189 x 49 x 7cm	10kg

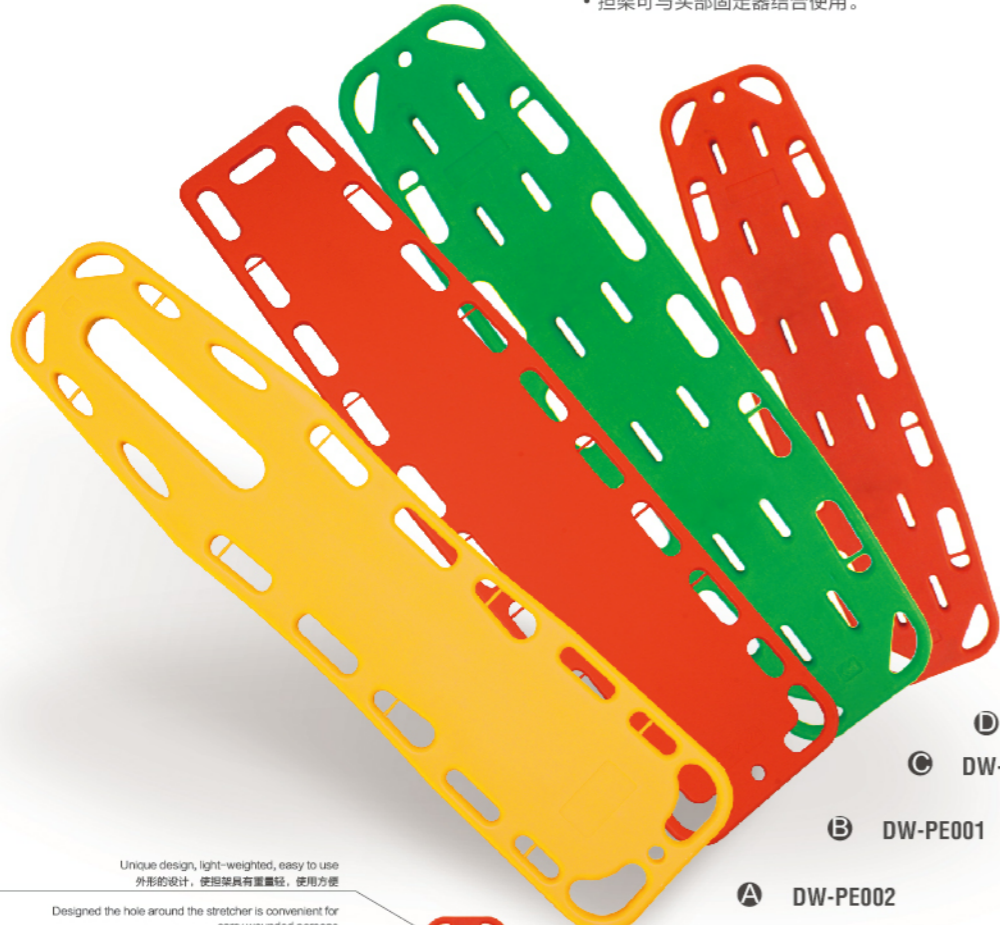
DW-PE

Technical features

- The stretcher is made of PE material with no discharge contaminator, and firmness to wear, it is allowed X-ray.
- The stretcher equipped with safety belts.
- It can be used with head immobilizer at the same time.

技术特点

- 本PE担架采用无释放污染的PE材料成型，坚固耐用，可进行X光透视。
- 担架配有安全带。
- 担架可与头部固定器结合使用。



Child
儿童型担架
D DW-PE006A

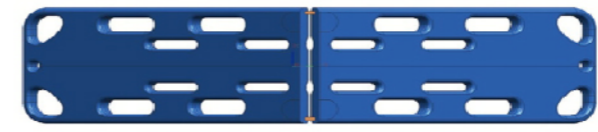
C DW-PE006

B DW-PE001

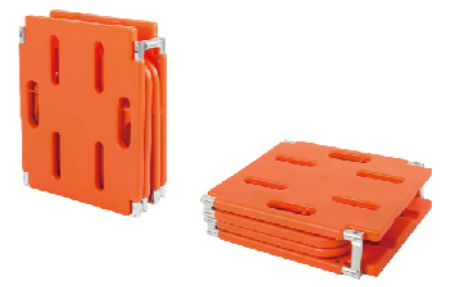
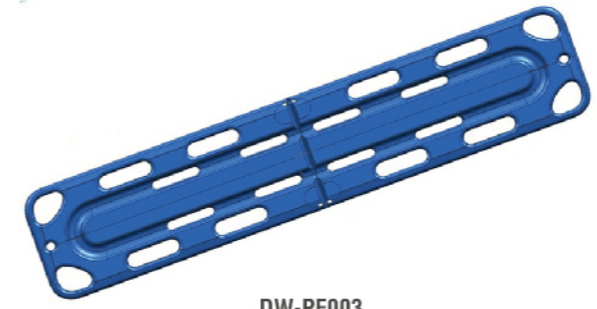
A DW-PE002



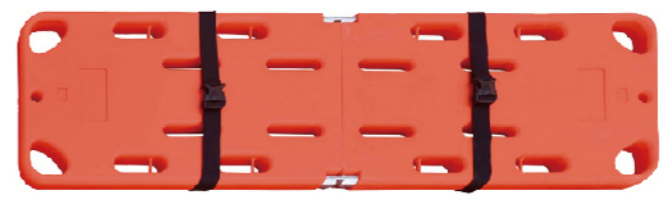
Model 型号	Product Size 展开尺寸 (L x W x H)	Net weight 自重	Load Limit 承重	Packing 木箱包装		
				Quantity 数量	Size 尺寸(L x W x H)	G.W毛重
DW-PE002	184 x 45 x 6cm	8kg	159kg	1	187 x 48 x 7cm	10.5kg
DW-PE001	186 x 41 x 5cm	6.5kg	159kg	1	188 x 43 x 7cm	11kg
DW-PE006A	186 x 41 x 5cm	6.5kg	159kg	1	188 x 43 x 7cm	11kg
DW-PE006 儿童	136 x 35 x 5cm	4.5kg	80kg	1	142 x 39 x 8cm	7kg
DW-PE007	184 x 41 x 6cm	6kg	250kg	1	186 x 43 x 8cm	8kg
DW-PE008	183 x 45 x 6cm	8kg	159kg	1	185 x 46 x 7cm	9kg



DW-PE003



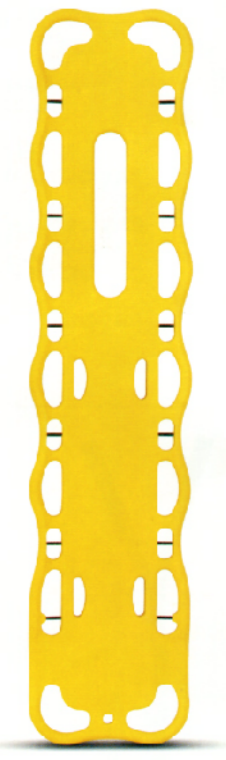
DW-PE004



DW-PE005



DW-PE008



DW-PE007

NBR Head Immobilizer
头部固定器(NBR)

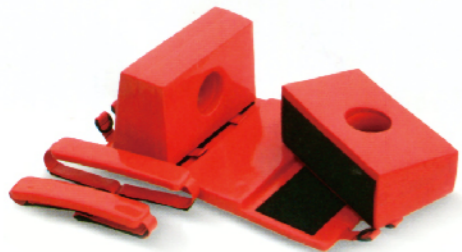
DW-FA001A/B

Technical features

- The head immobilization are made of high-density plastic, both sides have an ear hole.
- It can be used simultaneously with a scoop stretcher or PE stretcher.
- Waterproof plastic coating makes it easy to clean and prevents bacterial growth on it.



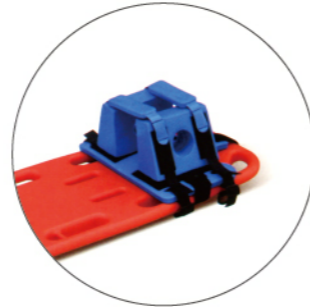
DW-FA001A
For Adult



DW-FA001B
For Child

技术特点

- 本头部固定器采用高密度塑料制成，两边留有两个耳孔。
- 可与铲式担架或板式担架同时使用。
- 此头部固定器防水、易清洁、防病毒感染。

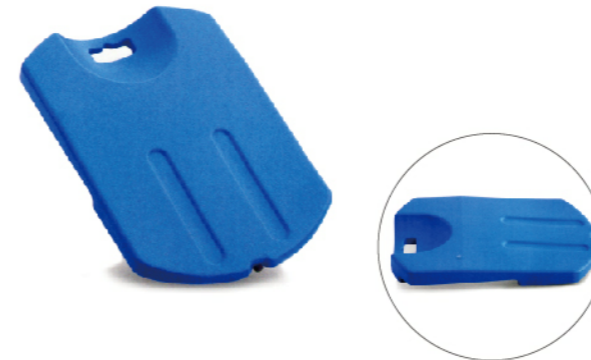


PE CPR Board
心脏复苏板(PE)

DW-FA002

Technical features

- The board is rugged and flexible
- The head shape ensure the patient airway open.
- It is molded by HDPE material. It is light in weight.
- There are two color selection



技术特点

- 板面坚固，有弹性。
- 头部的头部状结构，确保病人张开气道。
- 采用无释放污染HDPE材料中空吹塑一次成型，重量轻。
- 有两种颜色选择。

Traction Splint Set
腿部牵引架

DW-FA003AB/004AB

Technical features

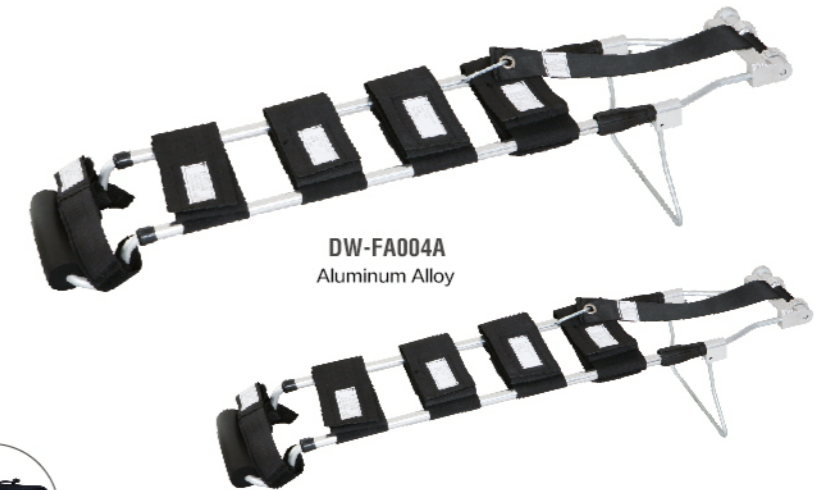
- Alleviate leg organizations pressure through traction, so to avoid further bleeding, and the nerves, blood vessels, bones and muscles secondary damage.
- Made of aluminum alloy, the length is adjustable, nylon leggings tape automatic traction device.
- The size is both suitable for adults and children.



DW-FA003A



DW-FA003B
Carbon Fiber



DW-FA004A
Aluminum Alloy



DW-FA004B
Aluminum Alloy

技术特点

- 通过牵引缓解伤腿组织压力，因此避免了进一步出血，以及对神经紧张，血管，骨头和肌肉的二次伤害。
- 由铝合金制成，长度可调节，有尼龙绑腿带子的自动牵引装置。
- 成人，小孩均适用。

Model 型号	Product Size 展开尺寸 (L x W x H)	Foldaway 折叠尺寸 (L x W x H)	Net weight 自重	Load Limit 承重	Packing 纸箱包装		
					Quantity 数量	Size 尺寸(L x W x H)	G.W毛重
DW-FA001A	40 x 26 x 16cm	-	1kg	-	8	54 x 45 x 63cm	11kg
DW-FA001B	26 x 34 x 14cm	-	0.5kg	-	10	58 x 38 x 56cm	8kg

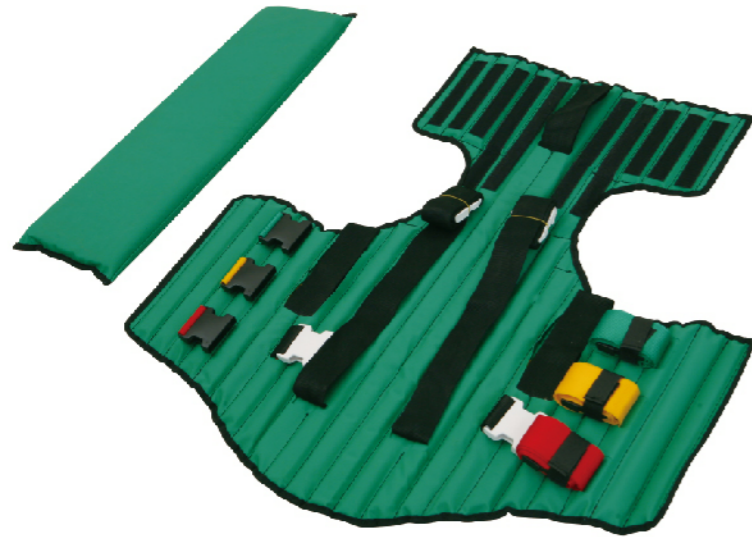
Model 型号	Product Size 展开尺寸 (L x W x H)	Foldaway 折叠尺寸 (L x W x H)	Net weight 自重	Packing 纸箱包装		
				Quantity 数量	Size 尺寸(L x W x H)	G.W毛重
DW-FA002	60 x 41 x 7cm	-	1.5kg	5	60 x 43 x 34cm	9.5kg
DW-FA003	140 x 8cm	28 x 15 x 5cm	0.5kg	20	29.5 x 74.5 x 29.5cm	11.5kg
DW-FA004	For adult	136 x 22 x 18cm	2kg	4	100 x 26 x 21cm	11.5kg
	For child	118 x 18 x 17cm	1.8kg	4	91 x 23 x 20cm	9kg

PVC Kendrick Extrication Device
胸背固定夹板(PVC)

DW-FA005

Technical features

- Surrounding designed to fix the patient. Applicable for patients in rib.
- Strips are in three colors, which can be quickly fixed. It is equipped with nylon buckles and safety belts. When used simultaneously with a neck fixation, the patient should be in sitting position, then be transferred to a PE stretcher.



For adult

技术特点

- 采用固定夹板围绕后背的设计使其固定病人，适用于肋骨受伤的病人。
- 该夹板上有三种颜色的带子，可快速固定，配有尼龙扣和保险带，当和颈部固定器同时使用时，病人应在坐姿时固定，然后再转移到板式担架上。



For child

TPU Vacuum Mattress Stretcher
真空担架(TPU)

DW-VMS002

Technical features

- Adopts high quality and durable TPU material. Filled with harmless EPS particulate material.
- The stretcher is molded according to the human body shape, and it can be used in X-rays and CT scan.
- The firmness of the stretcher can be adjusted by pumping air into the stretcher according to the situation of the patient. It's easy and fast to operate.
- The stretcher is designed with light weight. It is foldable after deflation and it's easy to carry.



技术特点

- 采用高质量耐用的TPU材料，内藏对人体无害的EPS颗粒材料；
- 担架根据人的体形制作成型并可适用于放射性X光透视，CT扫描。
- 救护人员可根据病人的伤势轻重使用气筒抽气，调节担架的软硬度，操作安全，简便快捷。
- 本担架设计具有重量轻，放气后可折叠，携带方便。

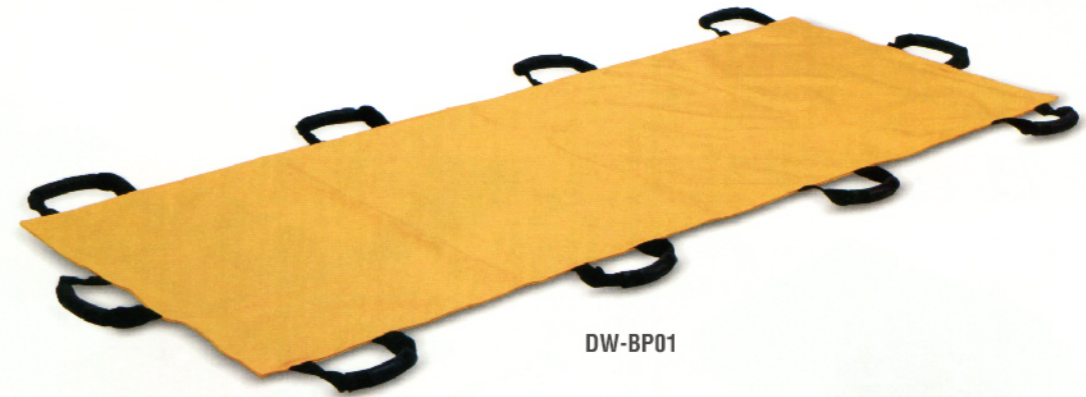
Model 型号	Product Size 展开尺寸 (L x W x H)	Foldaway 折叠尺寸 (L x W x H)	Net weight 自重	Load Limit 承重	Packing 纸箱包装		
					Quantity 数量	Size 尺寸(L x W x H)	G.W毛重
DW-FA005	For adult	82 x 71cm	3kg	-	2	86 x 28 x 79cm	8kg
	For child	59 x 64cm	2kg	-	2	62 x 20 x 19cm	5
DW-VMS002	For adult	197 x 97 x 7cm	6kg	160kg	1	96 x 60 x 29cm	8kg
	For child	150 x 72 x 6cm	3.5kg	100kg	1	-	-

Transfer sheet
转移担架

DW-BP01/02

Technical features

- DW-BP01 is made of waterproof nylon material. It features 10 holders and equipped with a handbag.
- DW-BP02 is made of laminated PVC sheet and PE foam, featuring 4 holders.
- DW-BP01/02 is particularly suitable for rescue in the wild, mountainous and high buildings. It is easy to carry and can reach the rescue site quickly.
- It allows X-Rays.



DW-BP01



DW-BP02



技术特点

- DW-BP01由防水尼龙材料制成，设有10个把手，配有手提包。
- DW-BP02由PVC夹网布和PE泡棉制成，设有4个把手。
- DW-BP01/02特别在野外、山区、高层楼面救援，携带方便，快速到达救援现场。
- 均可进行X光透视。

Model 型号	Product Size 展开尺寸 (L x W x H)	Foldaway 折叠尺寸 (L x W x H)	Net weight 自重	Load Limit 承重	Packing 纸箱包装		
					Quantity 数量	Size 尺寸(L x W x H)	G.W毛重
DW-BP01	210 x 75cm	55 x 26cm	3kg	100kg	5	60 x 29 x 25cm	14kg
DW-BP02	136 x 45cm	-	2.3kg	159kg	1	65 x 7 x 136cm	4kg

PE Cervical Collar
颈托(PE)

DW-CC001A

Technical features

- The design of the neck fixation is applicable to most patients .
- Designed with hole on throat position, it is convenient for the treatment of throat and trachea
- The height with several levels.
- Non-latex, non-toxic, low allergic.
- Made of special material, allowing X-ray, CAT and MRI scan.



技术特点

- 颈托尺寸设计适用于大多数病人。
- 喉部设有开孔，方便与对喉部或气管的进行检查和治疗。
- 颈托高度可分多档调节。
- 不含乳胶，无毒，低过敏性。
- 特殊材料制成，光，CAT照射和MR都能穿透。

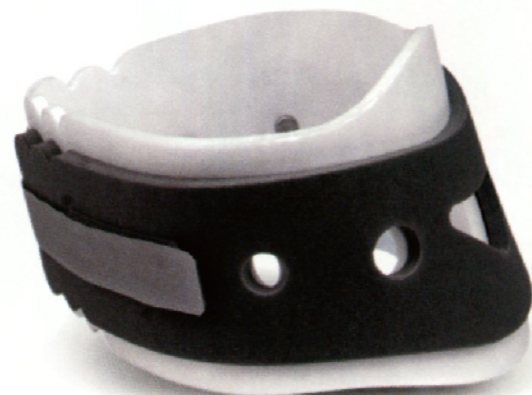
PE Cervical Collar
颈托(PE)

DW-CC001B

Technical features

- Packing: 40pcs/CTN
- Size: 59×42×35cm GW: 8kg
- Made of special materials, allowing X-ray, CAT and MRI scan.

Length is adjustable according to actual
根据患者的需要选择颈托的长度



技术特点

- 包装数量: 40件箱
- 包装尺寸: 59 × 42 × 35m 毛重:8kg
- 特殊材料制成，X光，CAT照射和MR都能穿透。

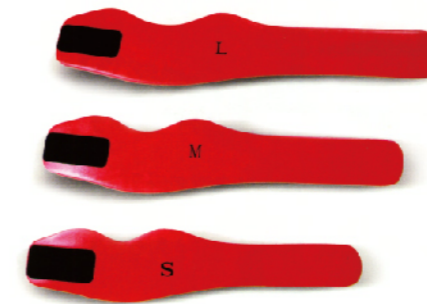
Model 型号	Product Size 展开尺寸 (L x W x H)	Foldaway 折叠尺寸 (L x W x H)	Net weight 自重	Load Limit 承重	Packing 纸箱包装		
					Quantity 数量	Size 尺寸(L x W x H)	G.W毛重
DW-CC-0001A For adult	56 x 19 x 1cm	-	0.2kg	-	-	-	-
DW-CC-0001A For child	47 x 17 x 1cm	-	0.15kg	-	-	-	-
DW-CC-0001B	54 x 13 x 0.5cm	-	0.1kg	-	40	61 x 45 x 39cm	6kg

PE Cervical Collar
颈托(PE)

DW-CC001C/D

Technical features

- This neck immobilizer is soft and comfortable, and can be fast fixed.
- It is made of soft materials, and its surface is vinyl, which can prevent bacterial infection and is against ingress of liquid.
- Made of special materials, allowing X-ray, CAT and MRI scan.
- Size: (63cm), M(57cm), S(51cm).



DW-CC001C

技术特点

- 颈托柔软舒适，可快速固定。
- 由软体材料制成，表面由乙烯基，防细菌感染，防液体渗入，易清洗。
- 特殊材料制成，X光，CAT照射和MR都能穿透。
- 尺寸: L(63cm), M(57cm), S(51cm)。



DW-CC001D



Made of special materials, allowing X-ray, CAT and MRI scan.
特殊材料制成，X光，CAT照射和MR都能穿透。

Designed with hole on throat position, it is convenient for the treatment of throat and trachea.
喉部设有开孔，方便与对喉部或气管的进行检查和治疗。

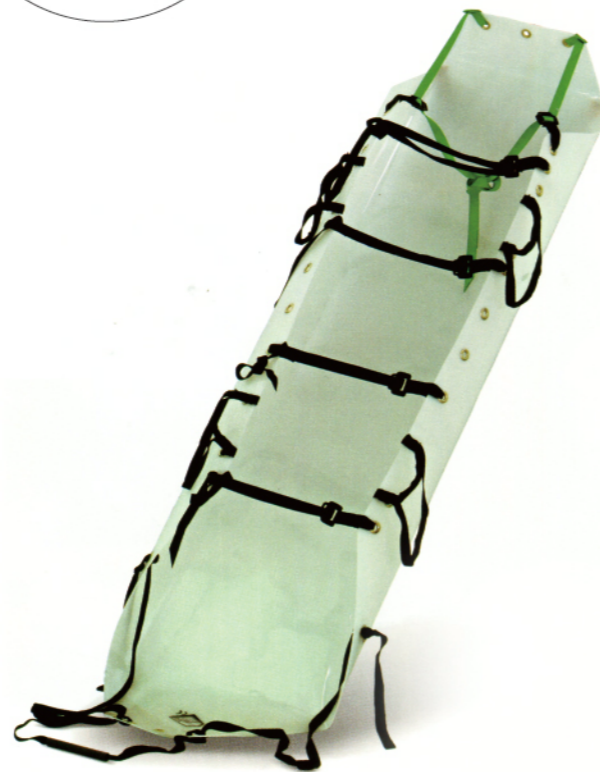
Model 型号	Product Size 展开尺寸 (L x W x H)	Foldaway 折叠尺寸 (L x W x H)	Net weight 自重	Load Limit 承重	Packing 纸箱包装			
					Quantity 数量	Size 尺寸(L x W x H)	G.W毛重	
DW-CC-0001C	L	63.5 x 13 x 0.5cm	-	0.1kg	-	30	68 x 31 x 39cm	7kg
	M	63.5 x 13 x 1cm	-	0.1kg	-	30	68 x 31 x 39cm	7kg
	S	57 x 13 x 1cm	-	0.1kg	-	30	68 x 31 x 39cm	7kg
DW-CC-0001D	L	51 x 10 x 1cm	-	0.1kg	-	5	127 x 25 x 20cm	3kg
	M	56 x 16 x 0.5cm	-	0.1kg	-	5	127 x 25 x 20cm	3kg
S	52 x 14 x 0.5cm	-	0.1kg	-	5	127 x 25 x 20cm	3kg	

Plastic Roll Stretcher
卷式担架

DW-RS01/02

Technical features

- Transport large scale casualties. Easy to clean.
- There is a loop for adding rope by carabiner in the middle of the red traction belt. one tubular plastic handle at each side, which makes it possible for the rescuer to grasp and pull at any side.
- Equipped with carabiner to attach the rope to the traction strap.



- 大规模搬运人员伤亡，容易清洗。
- 红色牵引带的中央有一个用登山扣附加绳子用的环。每一侧有一个管状塑料手柄，方便救援者在任一侧抓住并拖动。
- 配有登山扣将绳索附在牵引绳。

Pediatric Immobilization Stretcher
儿童型固定担架

DW-PS01

Technical features

- This stretcher is suitable for the whole body fixation of child. The size can be adjusted by safety belts which makes child's heart comfortable and respiratory smooth.
- The straps for leg and knee fixation can be used separately, and can be used in X-ray and CT scan.
- This stretcher can be applied to children height between 70cm to 130cm, and weight between 9kg to 40kg.
- Equipped with lifting handles at both sides for easy transport.



技术特点

- 此担架适用于儿童全身固定，尺寸可由安全带进行调整，可使儿童心脏舒适和呼吸畅通。
- 固定腿部和膝部的带子可单独使用，并可进行X光透视、CT扫描。
- 此担架适用于儿童身高70cm到130cm、重量在9kg到40kg的儿童使用。
- 此担架两边装有提起手把，以便转运时需要。

Pediatric Immobilization Strap
儿童型固定带

DW-PS02

Technical features

- These straps are designed to immobilize child weighted between 3.2kg to 18kg in an ambulance car.
- With three restraint straps.
- Fully-adjustable, composed of five belts, the belts can firmly fix the child during transport. It adopts PVC folder mesh material, which is non-toxic and easily clean.

技术特点

- 此固定带用于在救护车上固定体重3.2到18公斤的儿童。
- 此固定带由三根带子组成。
- 此固定带可调节，由五根吊带组成，可以牢牢地固定住儿童，确保安全。
- 采用无毒，易清洗的PVC夹网布材料。



Model 型号	Product Size 展开尺寸 (L x W x H)	Foldaway 折叠尺寸 (L x W x H)	Net weight 自重	Load Limit 承重	Packing 纸箱包装		
					Quantity 数量	Size 尺寸(L x W x H)	G.W毛重
DW-RS01	82 x 71cm	-	3kg	-	2	86 x 28 x 19cm	8kg
DW-RS02	82 x 71cm	-	3kg	-	2	86 x 28 x 19cm	8kg

Model 型号	Product Size 展开尺寸 (L x W x H)	Foldaway 折叠尺寸 (L x W x H)	Net weight 自重	Load Limit 承重	Packing 纸箱包装		
					Quantity 数量	Size 尺寸(L x W x H)	G.W毛重
DW-PS01	120 x 20 x 5cm	-	3kg	40kg	5	127 x 27 x 27cm	19kg
DW-PS02	80 x 48cm	10 x 48cm	1.5kg	5-18kg	5	40 x 23 x 27cm	8kg

Fracture Fixation Splint
骨折固定夹板

DW-FS01

Technical features

- Multifunctional nursing splints can be used simultaneously on four limbs.
- The splints include: adult arm splint, adult leg splint, shoulder immobilizer, child arm splint, child leg splint, straps, and a carrying case.
- X-ray translucent and CT scan compatible.
- AS-01 is mainly made of harmless PVC material.

技术特点

- 多功能护理夹板，可同时使用左右四肢。
- 组件包括：成人手臂、腿部、肩关节，儿童手臂、腿部、固定带和一个手提袋。
- 可进行X光和CT扫描。
- AS-01主要由对人皮肤无害的PVC材料制成。



Fracture Fixation Splint
骨折固定夹板

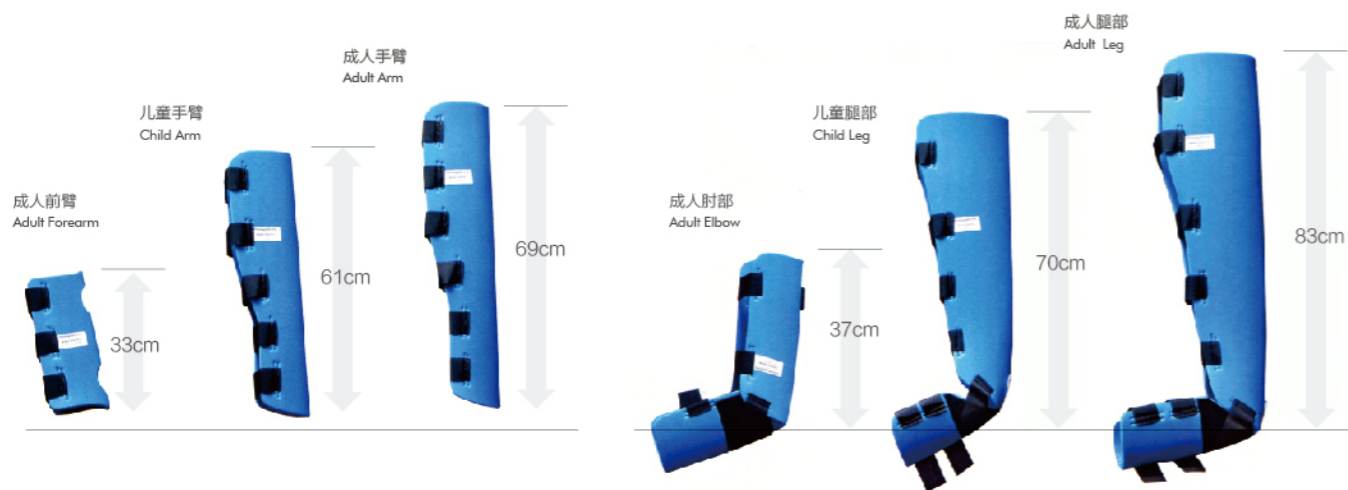
DW-FS02

Technical features

- Multifunctional nursing splints can be used simultaneously on four limbs.
- The splints include: adult arm splint, adult leg splint, shoulder immobilizer, child arm splint, child leg splint, straps, and a carrying case.
- X-ray translucent and CT scan compatible.
- AS-02 is mainly made of harmless EVA material.

技术特点

- 多功能护理夹板，可同时使用左右四肢。
- 组件包括：成人手臂、腿部、肩关节，儿童手臂、腿部、固定带和一个手提袋。
- 可进行X光和CT扫描。
- AS-02主要由对人皮肤无害的EVA材料制成。



Model 型号	Product Size 展开尺寸 (L x W x H)	Foldaway 折叠尺寸 (L x W x H)	Net weight 自重	Load Limit 承重	Packing 纸箱包装		
					Quantity 数量	Size 尺寸(L x W x H)	G.W毛重
DW-FS01	-	-	3kg	-	2	74 x 19 x 35cm	7kg
DW-FS02	-	-	1.5kg	-	1	92 x 36 x 16cm	2kg

Fracture Fixation Splint
骨折固定夹板

DW-FS03

Technical features

- This multifunctional nursing splints can be used for both left and right limbs at same time.
- The splints include: adult arm splint, adult leg splint, shoulder splint, child arm splint, child leg and waist splint, straps and a carrying bag.
- The splints are suitable for X-ray and CT scan.

技术特点

- 多功能空气夹板，可同时使用左右四肢。
- 组件包括：成人手臂、腿部、肩关节，儿童手臂、腿部和腰部、固定带和一个手提袋。
- 可进行X光和CT扫描。



Fracture Fixation Splint
骨折固定夹板

DW-FS04

Technical features

- Adopts high quality and durable TPU material. Filled with harmless EPS particulate material.
- It can be used in X-rays and CT scan.
- The firmness of the stretcher can be adjusted by pumping air into the stretcher according to the situation of the patient. it's easy and last to operate.

技术特点

- 采用高质量耐用的TPU材料，内藏对人体无害的EPS颗粒材料。
- 可适用于放射性X光透视，CT扫描。
- 救护人员可根据病人的伤势轻重使用气筒抽气，调节夹板的软硬度，操作安全，简便快捷。



Model 型号	Product Size 展开尺寸 (L x W x H)	Foldaway 折叠尺寸 (L x W x H)	Net weight 自重	Load Bearing 承重	Packing 纸箱包装		
					Quantity 数量	Size 尺寸(L x W x H)	G.W毛重
DW-FS03	-	-	1kg	-	10	52 x 28 x 25cm	10kg
DW-FS04	-	-	-	-	-	-	-

Folding Bed
折叠床

DW-ST098/099/100

Technical features

- It characterized by its being small-sized, light-weighted, heat preservation and easy-carried.
- When it is unfolded, it can be used as a simple bed in the tent.

技术特点

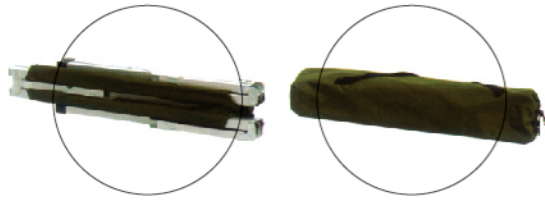
- 具有体积小，重量轻，保温性好，携带方便。
- 展开后可做简易床使用。



DW-ST098
Stainless Steel



DW-ST099
Aluminum Alloy



DW-ST100



Medical Stool
医师凳

DW-MS01/02/03/04/05



DW-MS01
Stainless Steel Material
Height is Adjustable

不锈钢材质，高度可调节



DW-MS02
Stainless Steel Material
Height is Adjustable

不锈钢材质，高度可调节



DW-MS05

9cm thickness sponge mattress,
chromiumcoated steel structure.
The height can be adjusted by rotation

海绵垫子9cm，钢制镀铬结构
高度可旋转调节

Size: 36x70cm
Weight: 5kg
Packing size: 38x38x45cm
G.W.: 6kg



DW-MS03

6cm thickness EVA foam mattress,
chromiumcoated steel structure.
The height can be adjusted by pneumatic spring

EVA发泡垫子6cm，钢制镀铬结构
高度可有气弹簧调节

Size: 33x60cm
Weight: 5kg
Packing: 2pCS/CTN
Size: 41x41x26cm
G.W.: 6kg



DW-MS04

6cm thickness EVA foam mattress,
chromiumcoated steel structure.
The height can be adjusted by pneumatic spring

EVA发泡垫子6cm，钢制镀铬结构
高度可有气弹簧调节

Size: 33x60cm
Weight: 5kg
Packing: 2pCS/CTN
Size: 41x41x26cm
G.W.: 6kg

Model 型号	Product Size 展开尺寸 (L x W x H)	Foldaway 折叠尺寸 (L x W x H)	Net weight 自重	Load Limit 承重	Packing 纸箱包装		
					Quantity 数量	Size 尺寸(L x W x H)	G.W毛重
DW-ST098	190 x 60 x 72cm	95 x 60 x 6cm	16kg	160kg	1	91 x 62 x 14cm	20kg
DW-ST099	190 x 64 x 45cm	92 x 19 x 11cm	6kg	160kg	2	94 x 21 x 25cm	19kg
DW-ST100	190 x 60 x 30cm	96 x 55 x 11cm	6kg	160kg	1	98 x 57 x 20cm	10kg

First-Aid Kit
急救箱

DW-FAK



DW-FAK01
Apply an aluminum alloy kit, its internal structure is compactly.
Size: 54×23×41cm
采用铝合金箱体，内部结构紧凑合理。
尺寸：54×23×41cm



DW-FAK02
The Aluminum Emergency Case shaping by single piece of aluminum plate, it is firm and durable.
The kit can accommodate items, it can contain 2.5L Oxygen cylinder maximum.
The internal space can be adjusted at random.
Size: 56×43×25cm
采用整块铝板一次成型，坚固耐用。
可任意组合放置大小急救物品，最大可使用2.5L氧气瓶
内部空间可随意组合。
尺寸：56×43×25cm



DW-FAK03
Apply an ABS plastic kit, its internal structure is compactly.
Size: 44×32×15cm
采用ABS塑料箱体，内部结构紧凑合理。
尺寸：44×32×15cm



DW-FAK04
Apply an ABS plastic kit, its internal structure is compactly.
Size: 45×37×15cm
采用ABS塑料箱体，内部结构紧凑合理。
尺寸：45×37×15cm

Model 型号	Product Size 展开尺寸 (L x W x H)	Foldaway 折叠尺寸 (L x W x H)	Net weight 自重	Packing 纸箱包装		
				Quantity 数量	Size 尺寸(L x W x H)	G.W毛重
DW-FAK01	52 x 19 x 38cm	-	-	1	52 x 20 x 41cm	4.5kg
DW-FAK02	52 x 22 x 36cm	-	-	1	56 x 24 x 43cm	8.3kg
DW-FAK03	45 x 37 x 15cm	-	-	1	47 x 39 x 17cm	-
DW-FAK04	43 x 15 x 30cm	-	-	1	45 x 20 x 32cm	3.3kg

First-Aid Kit
急救包

DW-FAK



DW-FAK05
Size: 65×34×30cm
尺寸：65×34×30cm



DW-FAK06
Size: 67×35×30cm
尺寸：67×35×30cm



DW-FAK07
Size: 54×30×25cm
尺寸：54×30×25cm



DW-FAK08
Size: 55×28×25cm
尺寸：55×28×25cm



DW-FAK09
Size: 70×28×30cm
尺寸：70×28×30cm



DW-FAK10
Size: 43×28×23cm
尺寸：43×28×23cm



DW-FAK11
Size: 52×31×25cm
尺寸：52×31×25cm



DW-FAK12
Size: 50×30×28cm
尺寸：50×30×28cm



DW-FAK13
Size: 65×43×30cm
尺寸：65×43×30cm